



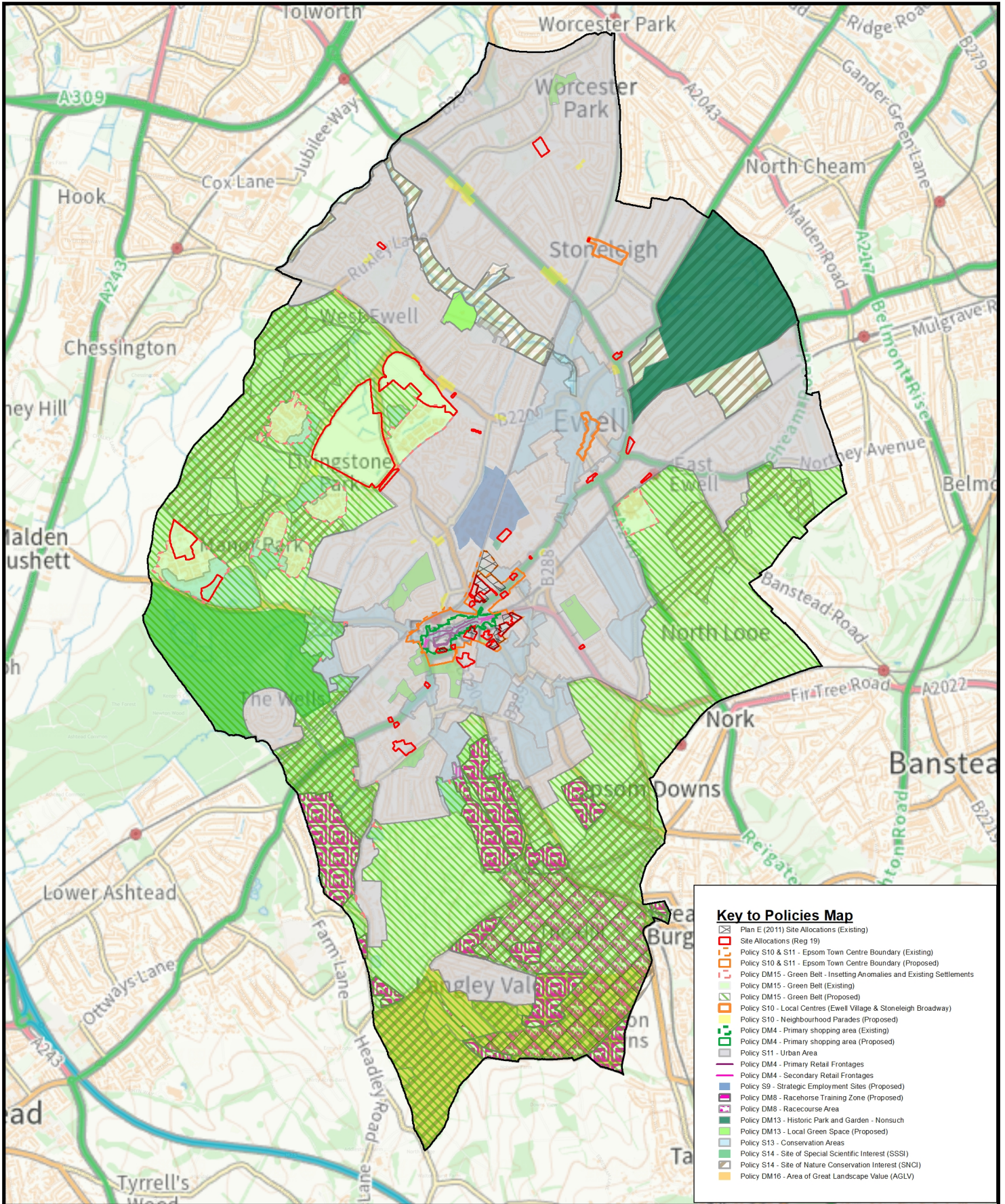
# **Policies Map**

# **Proposed Submission**

# **Local Plan**

# **2022-2040**

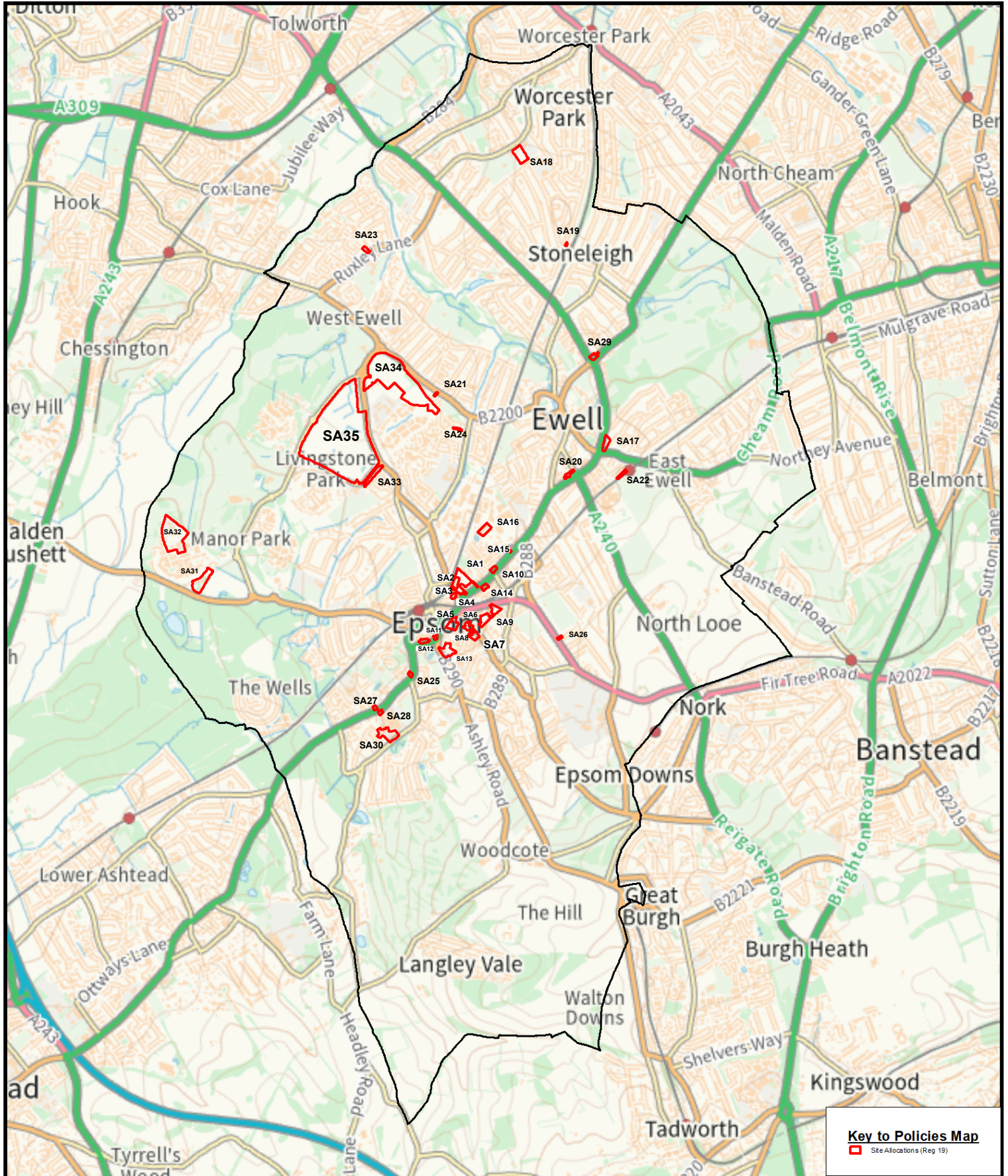
**(Regulation 19)**





# Policies Map

## Site Allocations

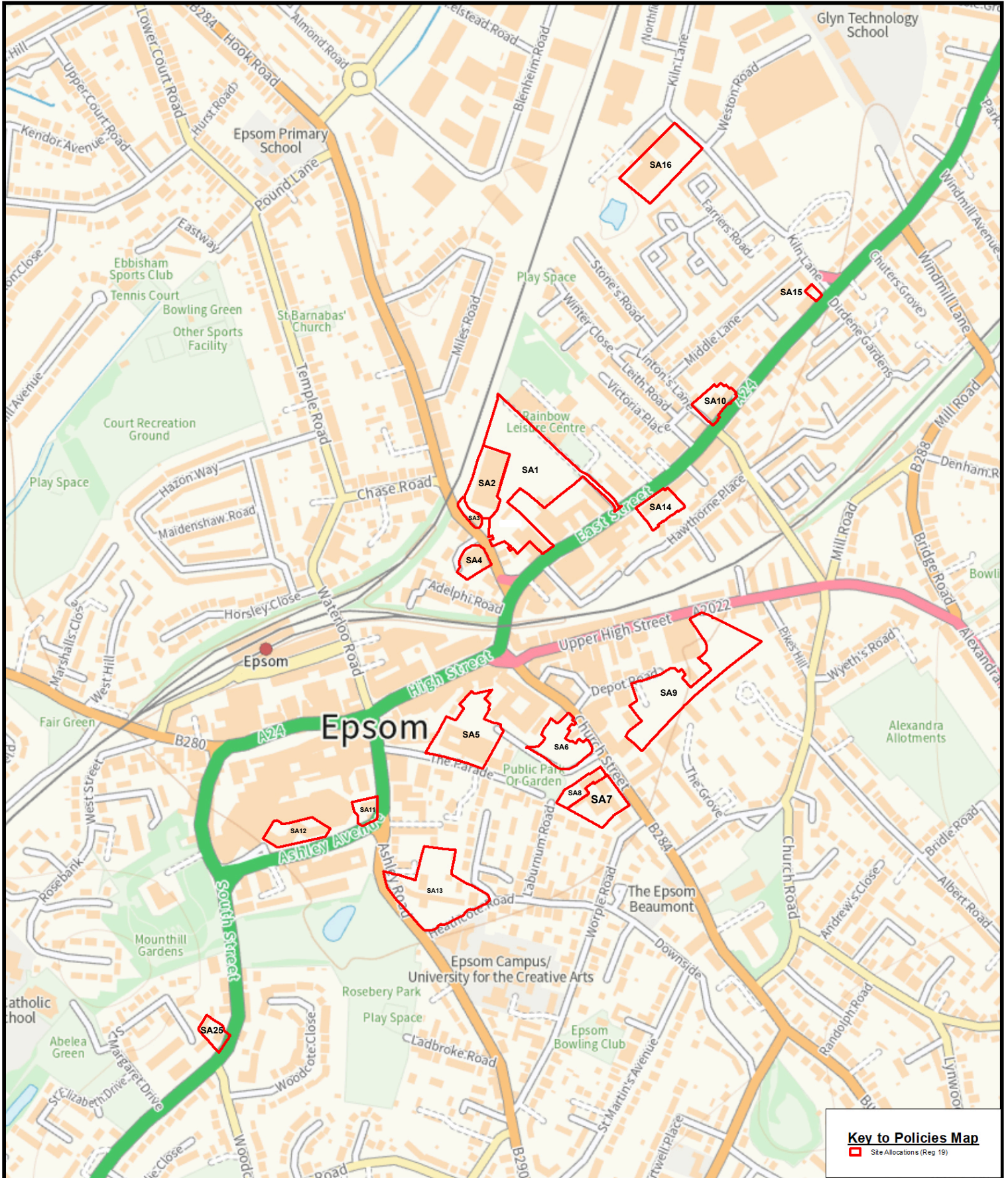




# Policies Map

## Site Allocations

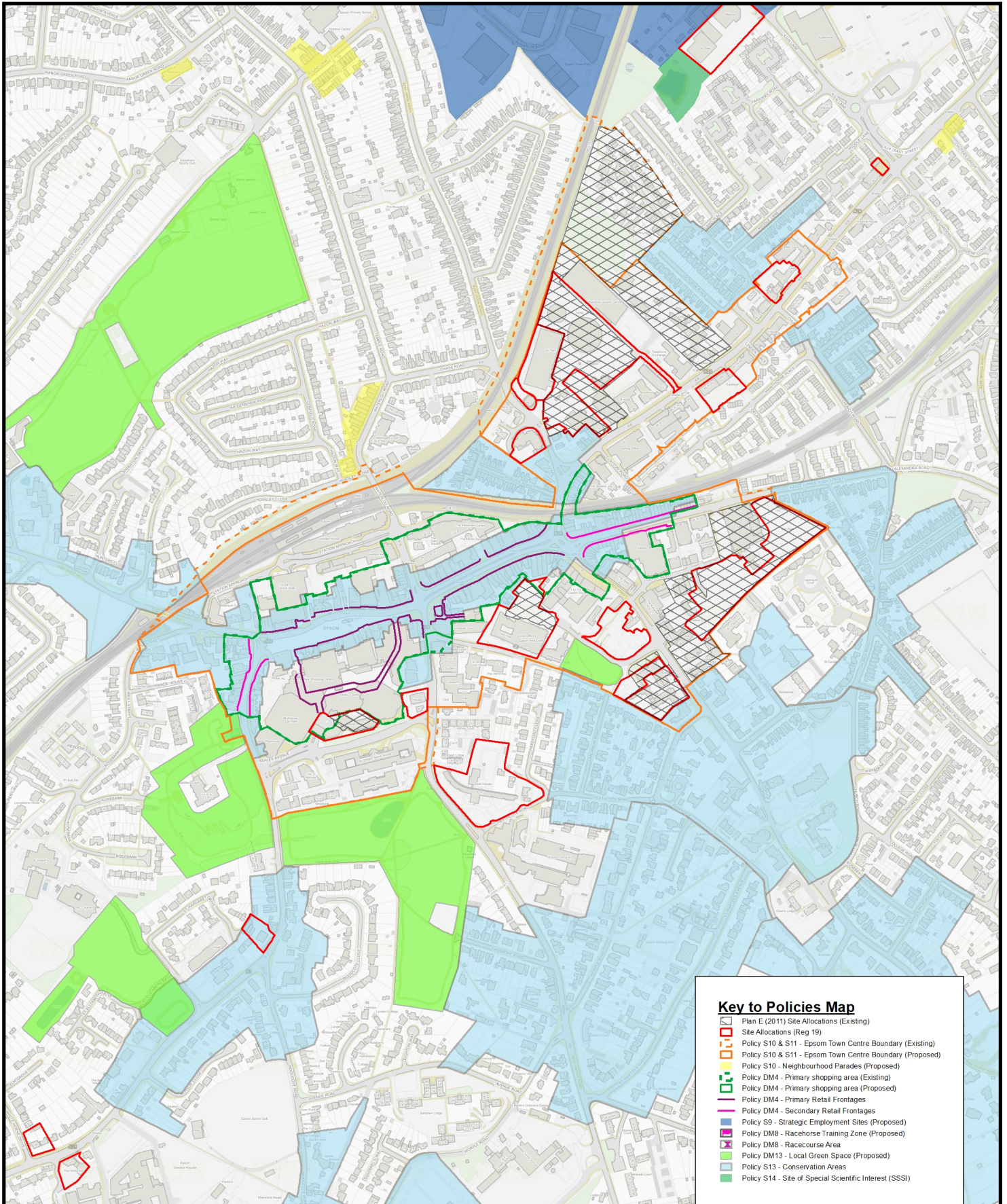
Town Centre Inset





# Policies Map

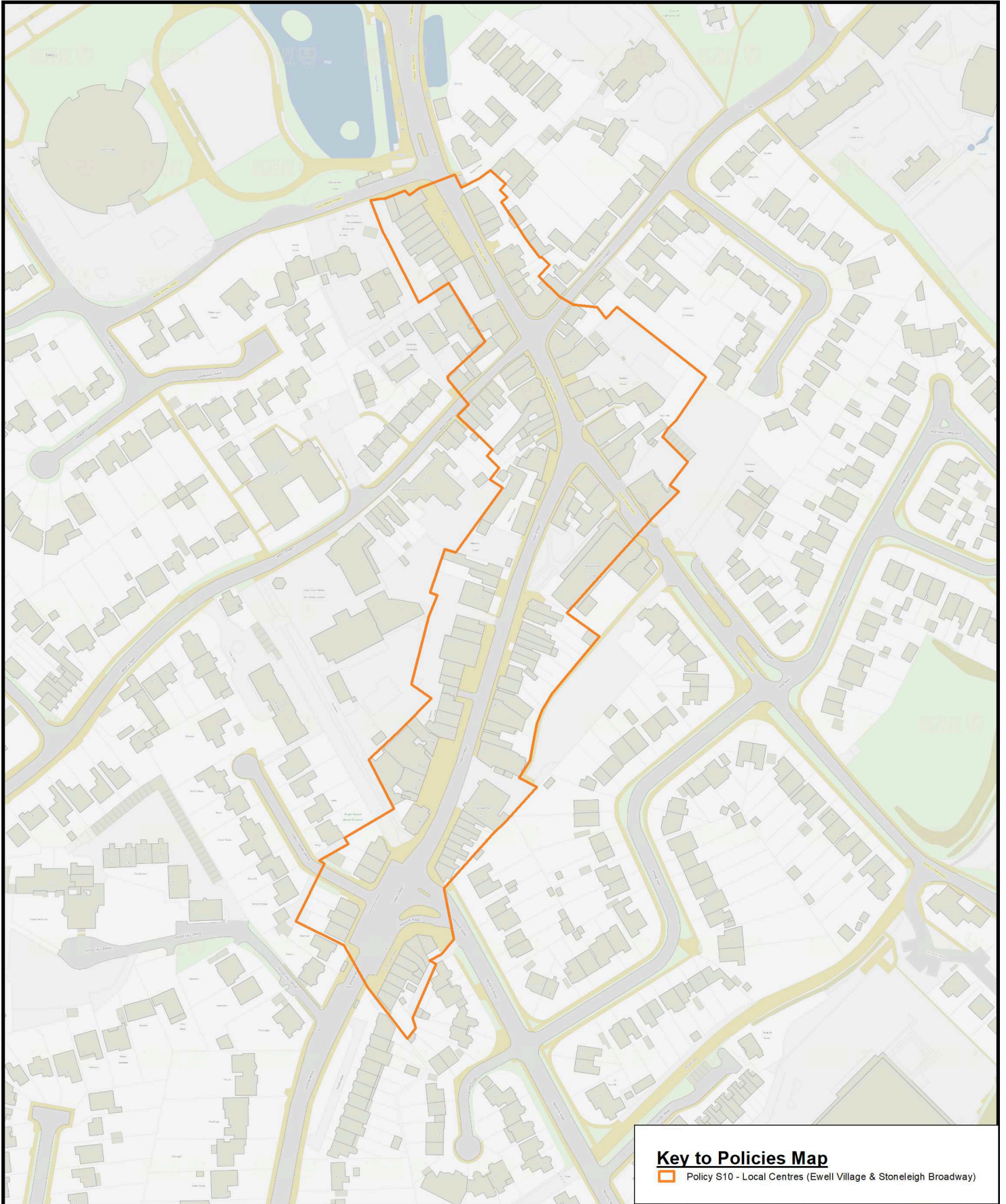
## Epsom Town Centre Inset





# Policies Map

Ewell Village





# Policies Map

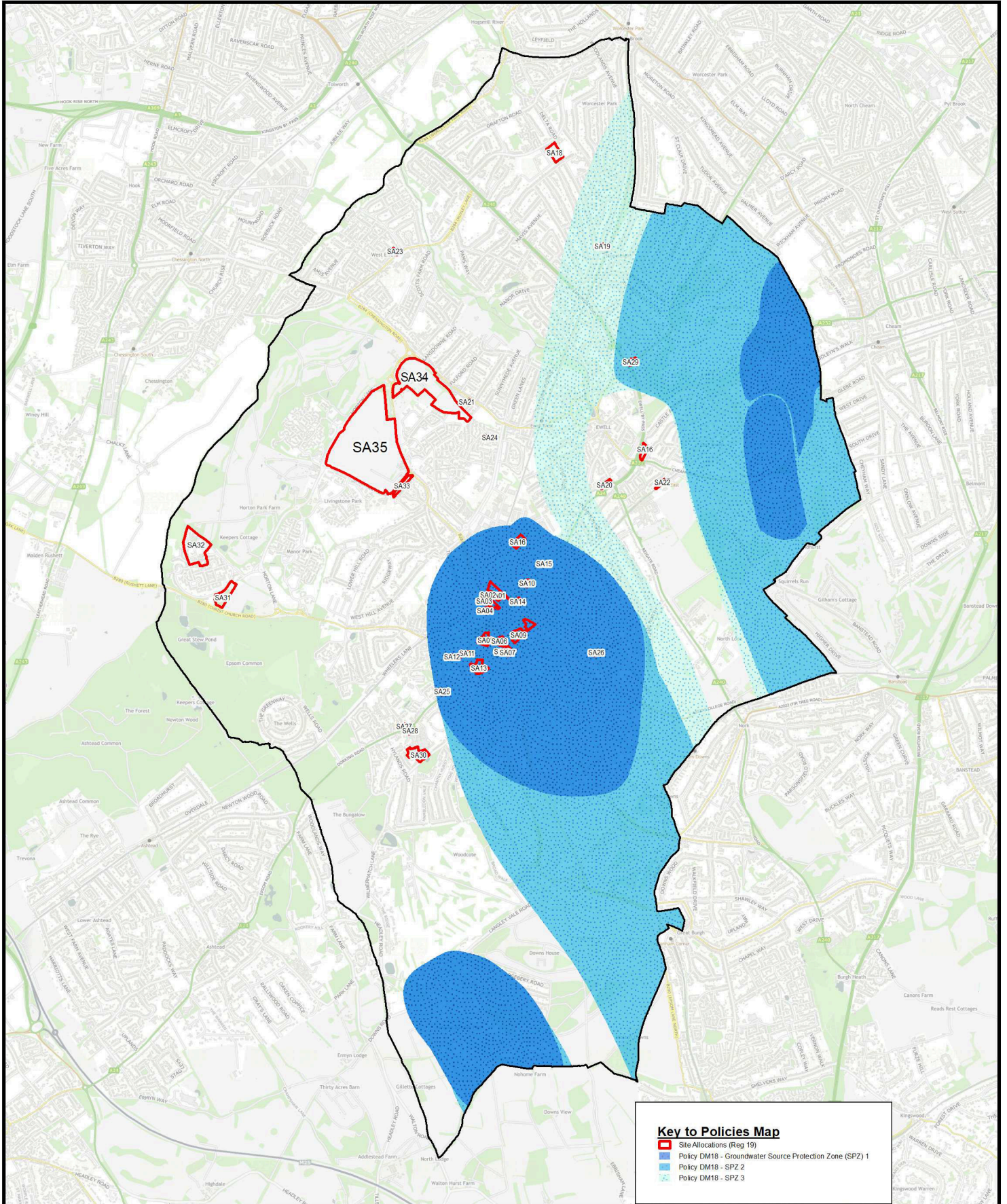
Stoneleigh Broadway





# Policies Map

## Groundwater Source Protection Zones

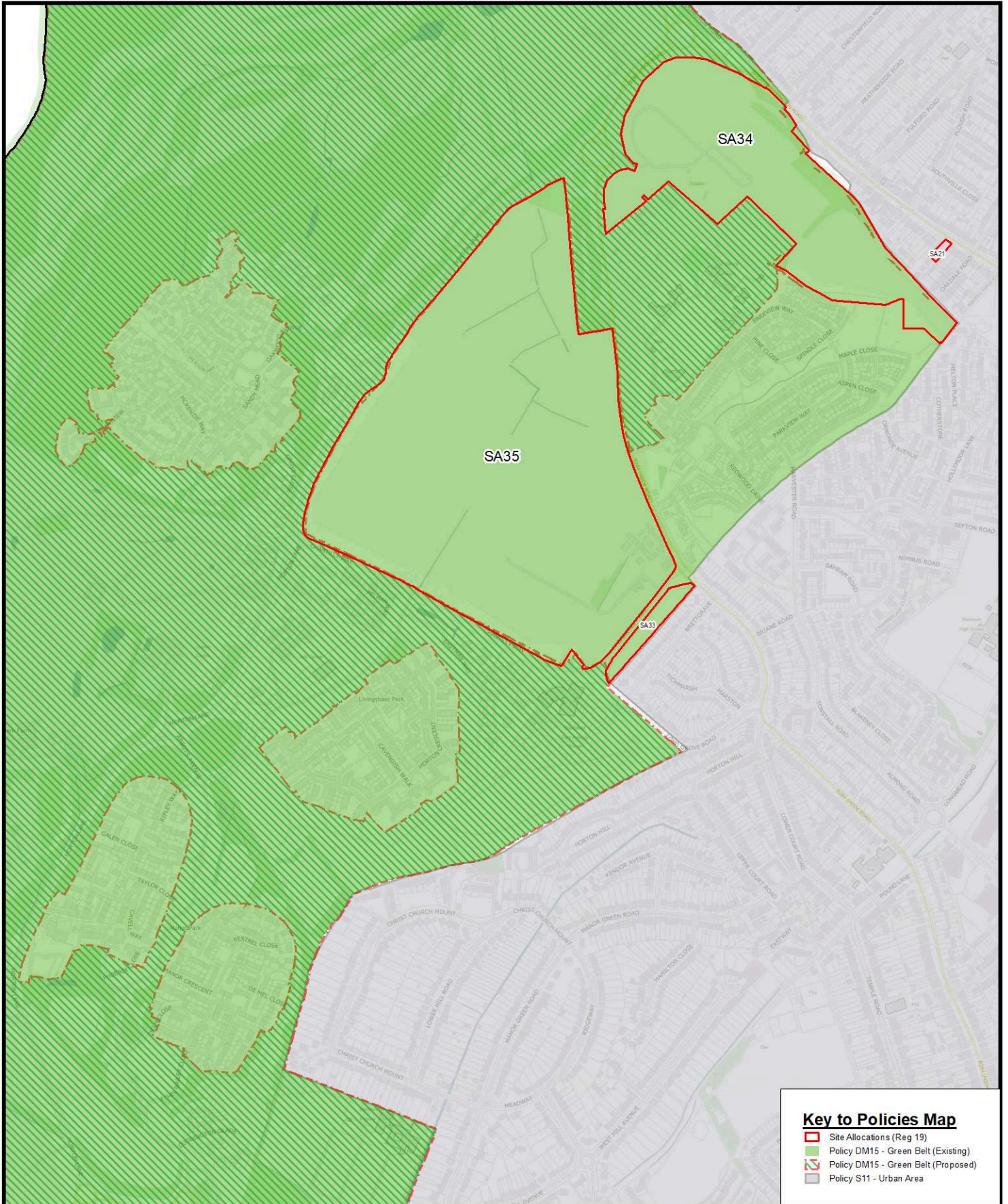






# Policies Map

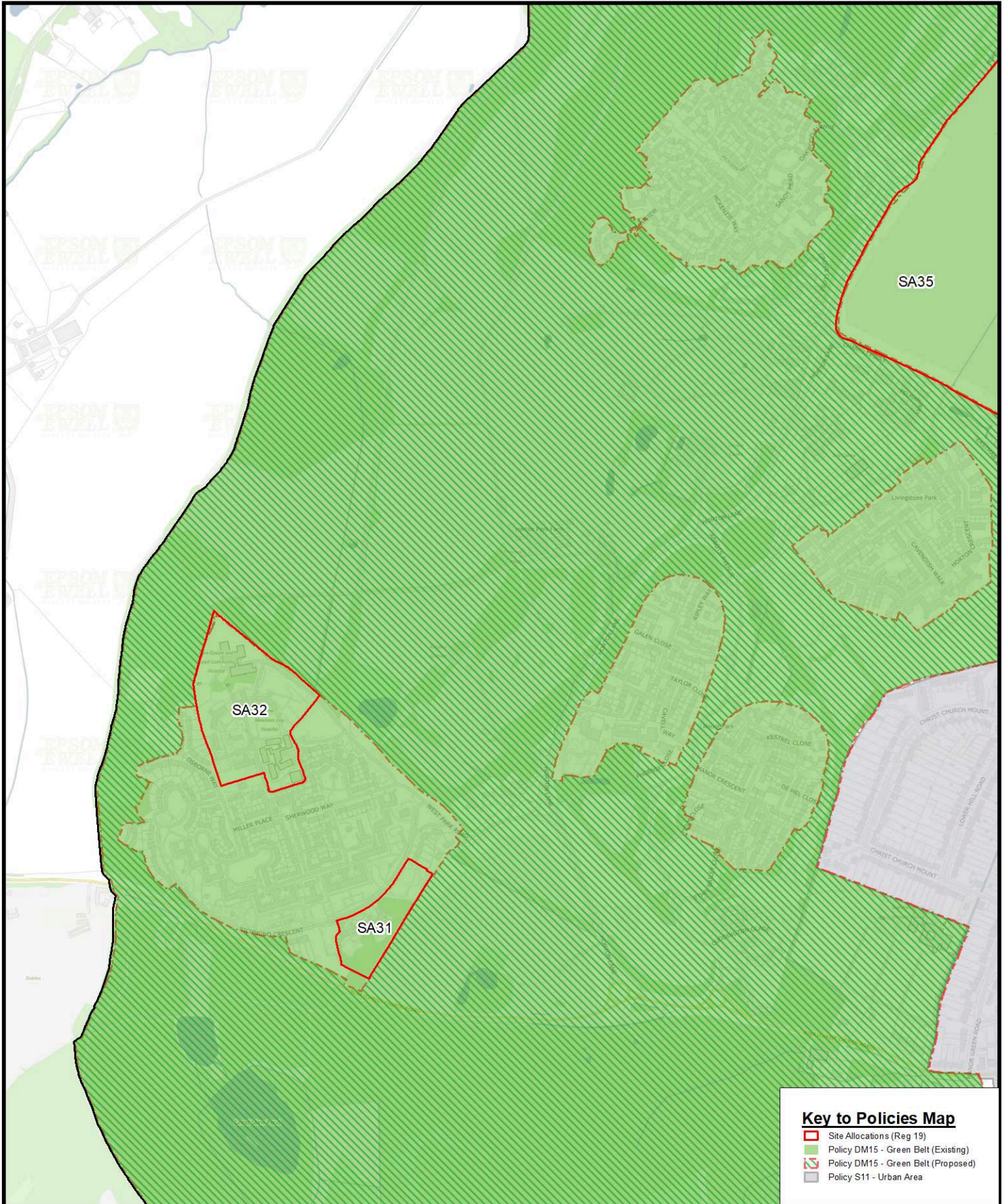
## Green Belt Inset (1)





# Policies Map

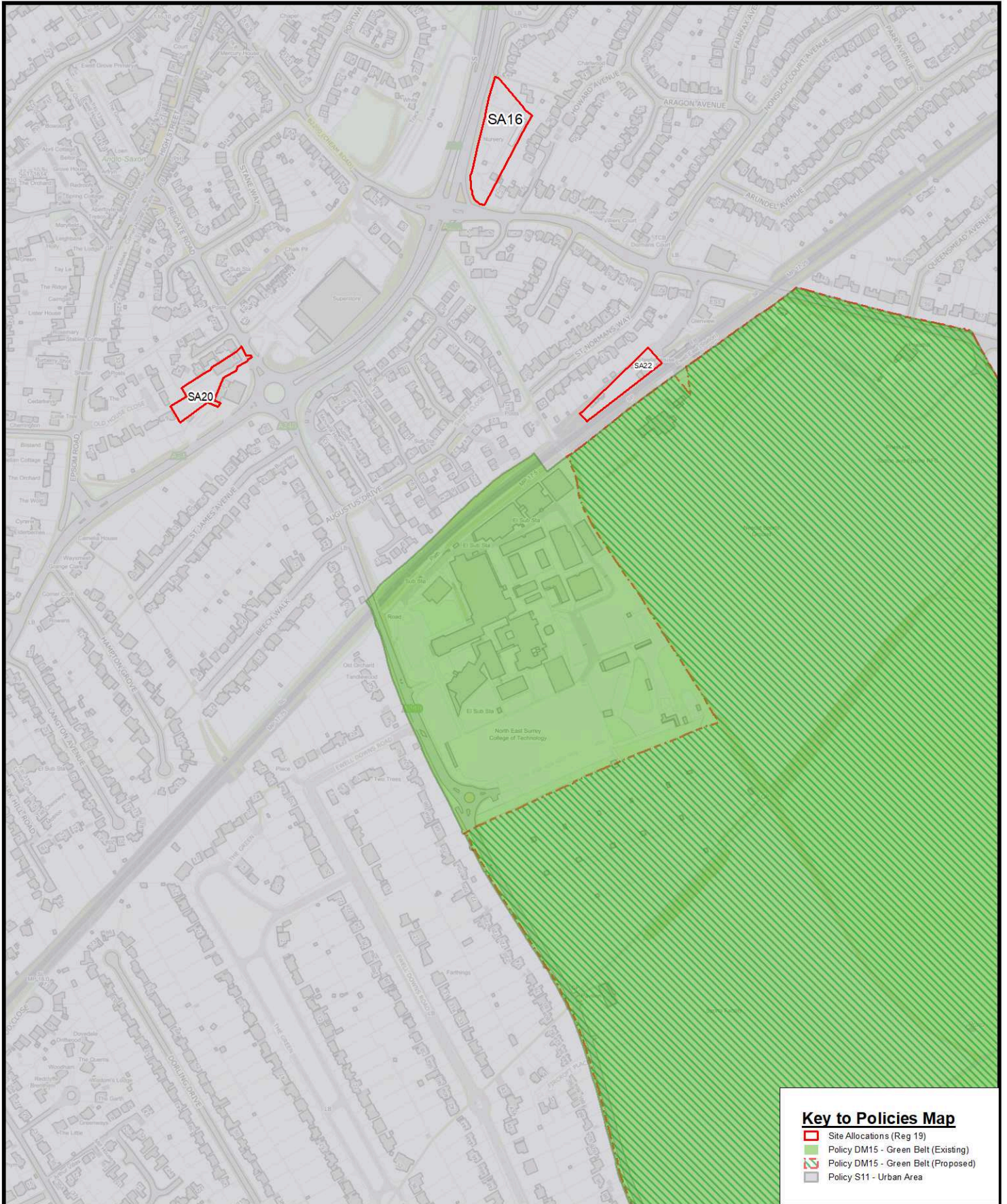
## Green Belt Inset (2)





# Policies Map

## Green Belt Inset (3)



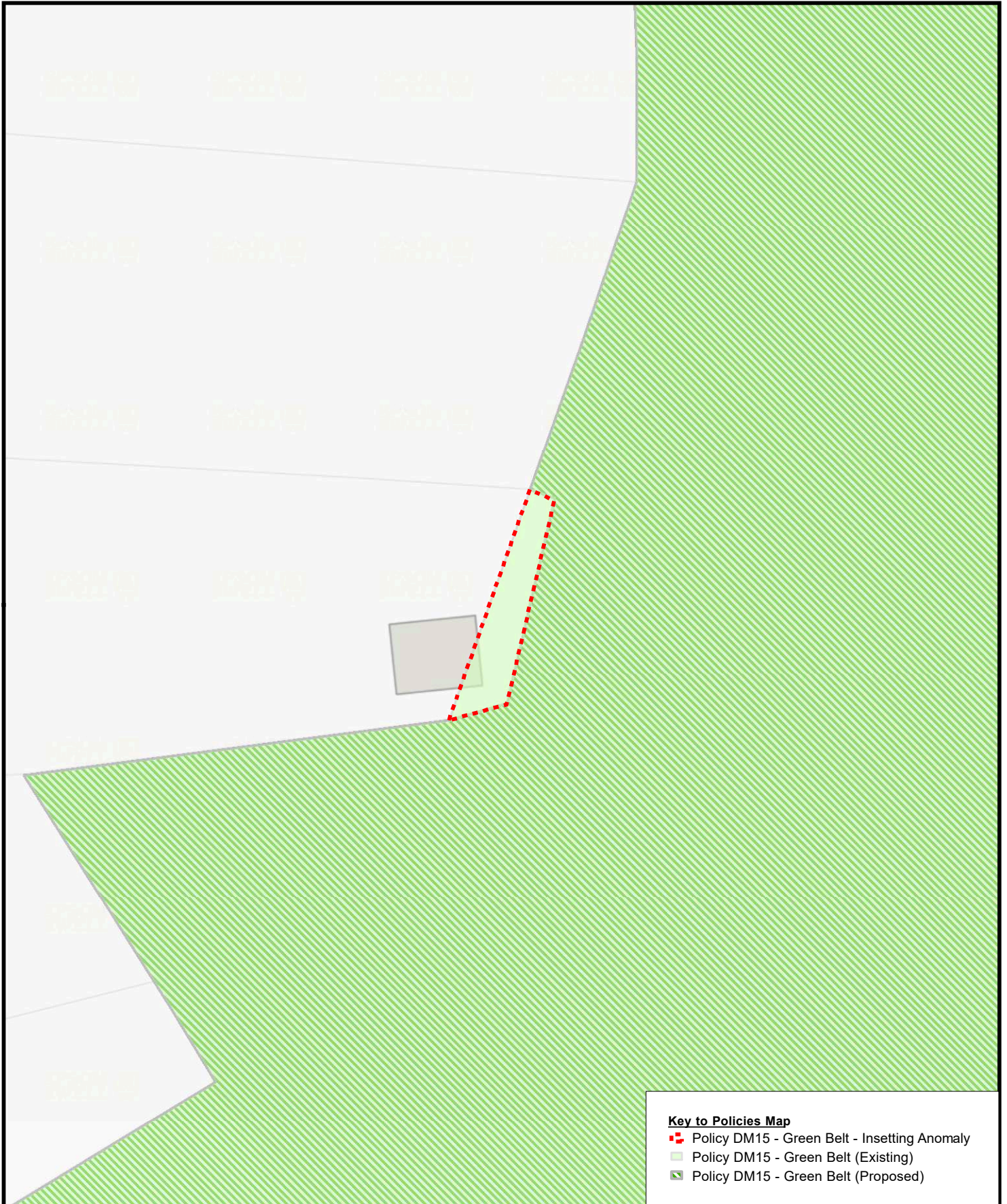
**Key to Policies Map**

-  Site Allocations (Reg 19)
-  Policy DM15 - Green Belt (Existing)
-  Policy DM15 - Green Belt (Proposed)
-  Policy S11 - Urban Area



# Green Belt

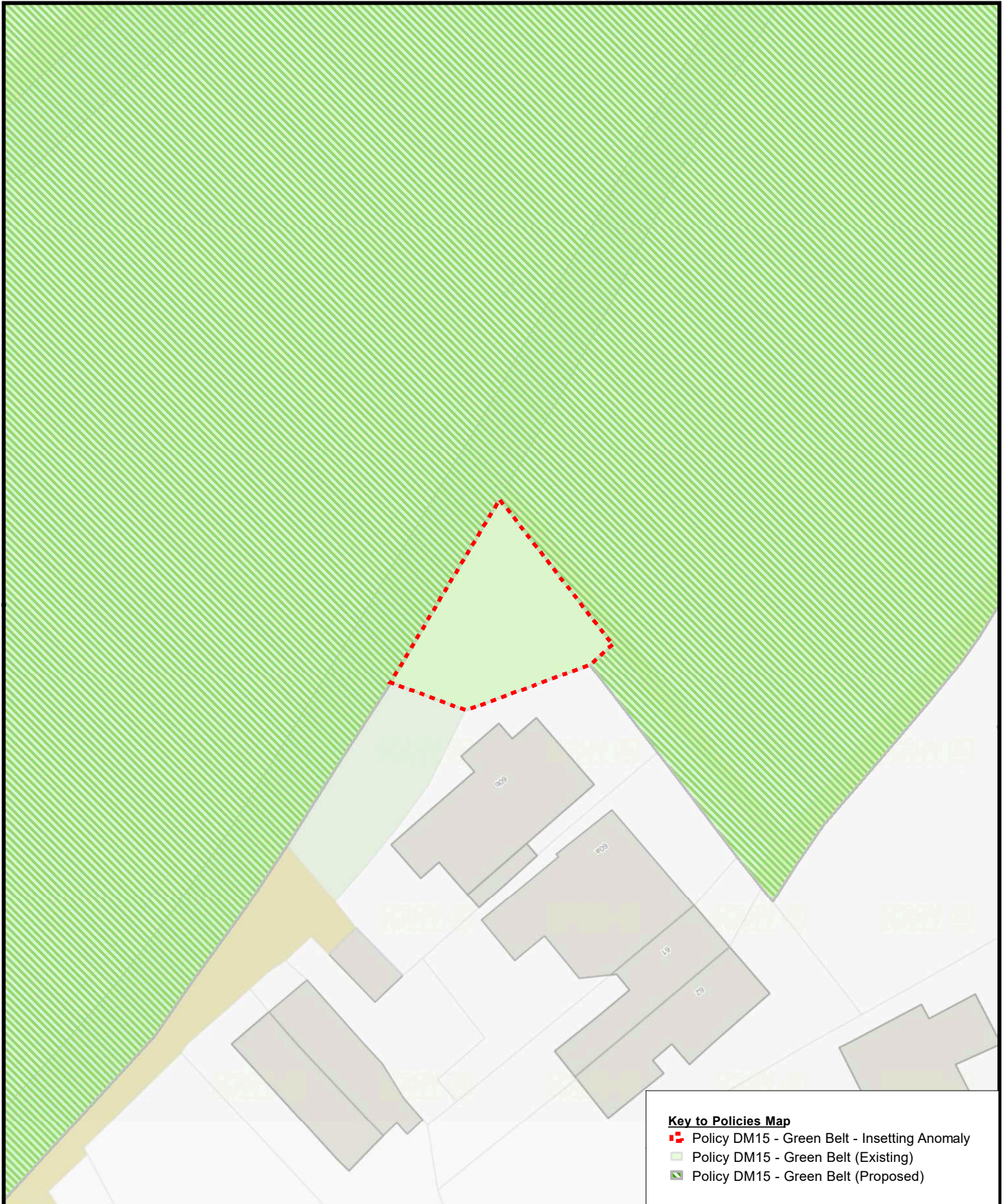
## Anomaly Inset (55 Longdown Lane North)





# Green Belt

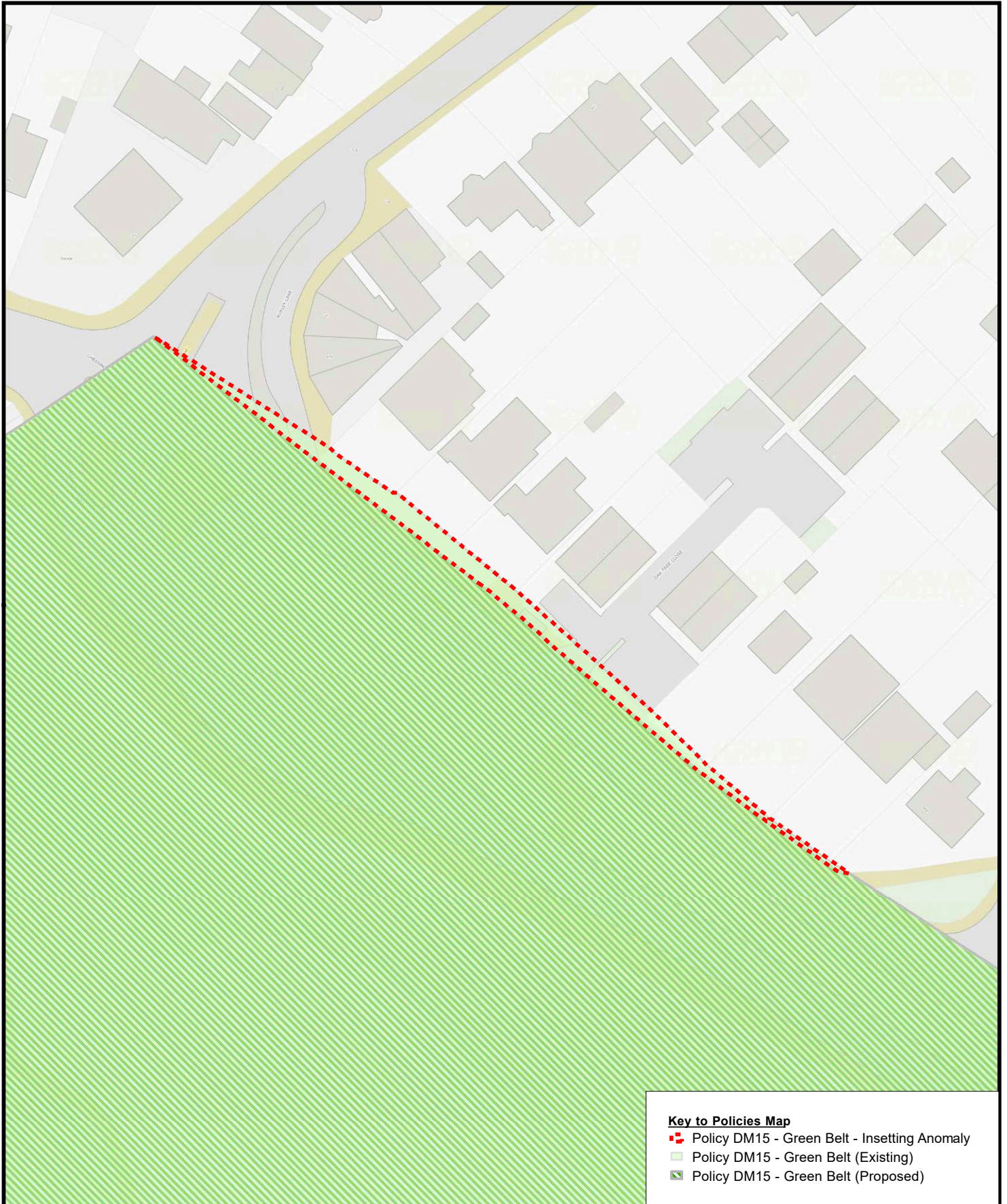
## Anomaly Inset (Bramble Walk)





# Green Belt

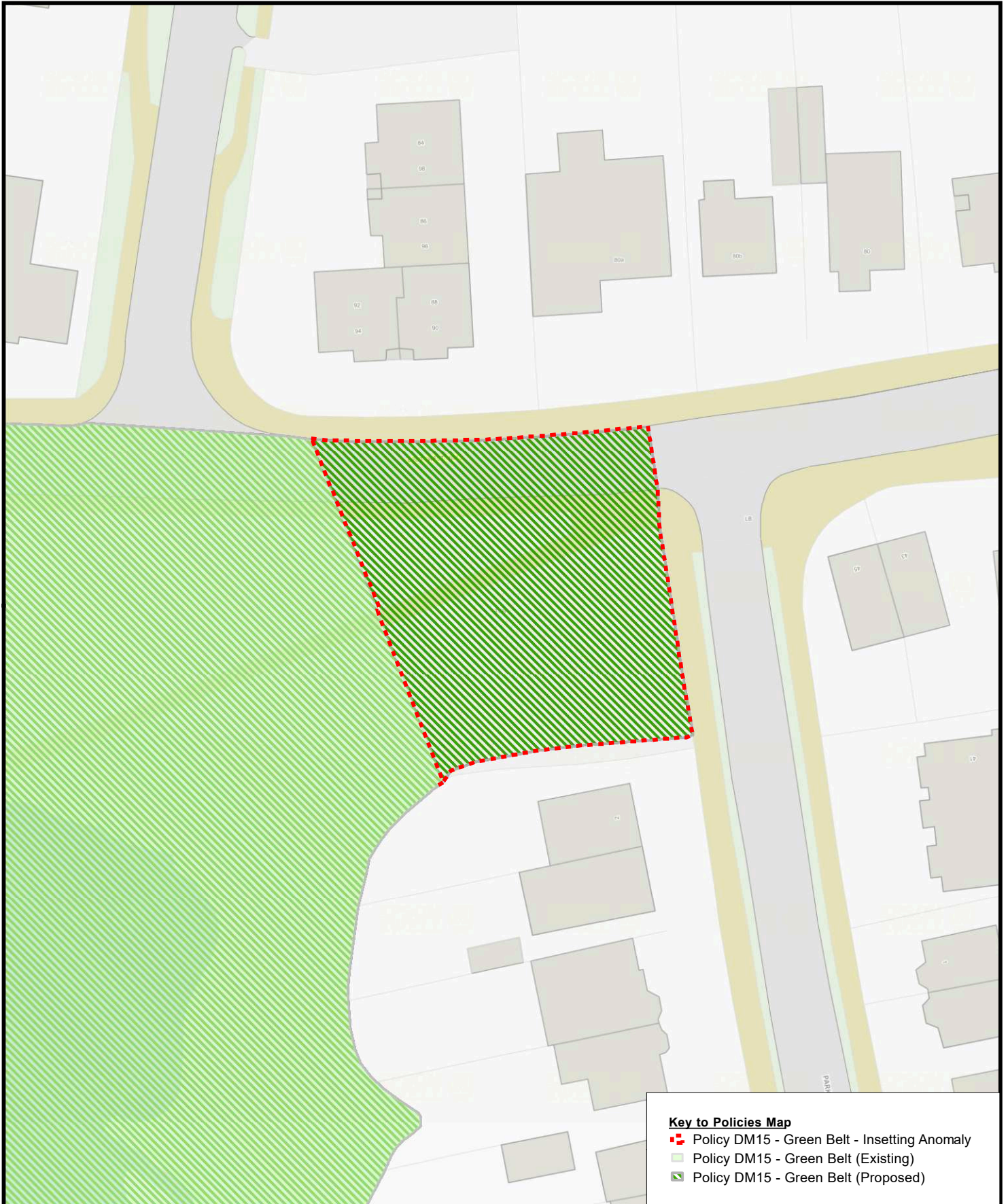
## Anomaly Inset (Chessington Road / Oak Tree Close)





# Green Belt

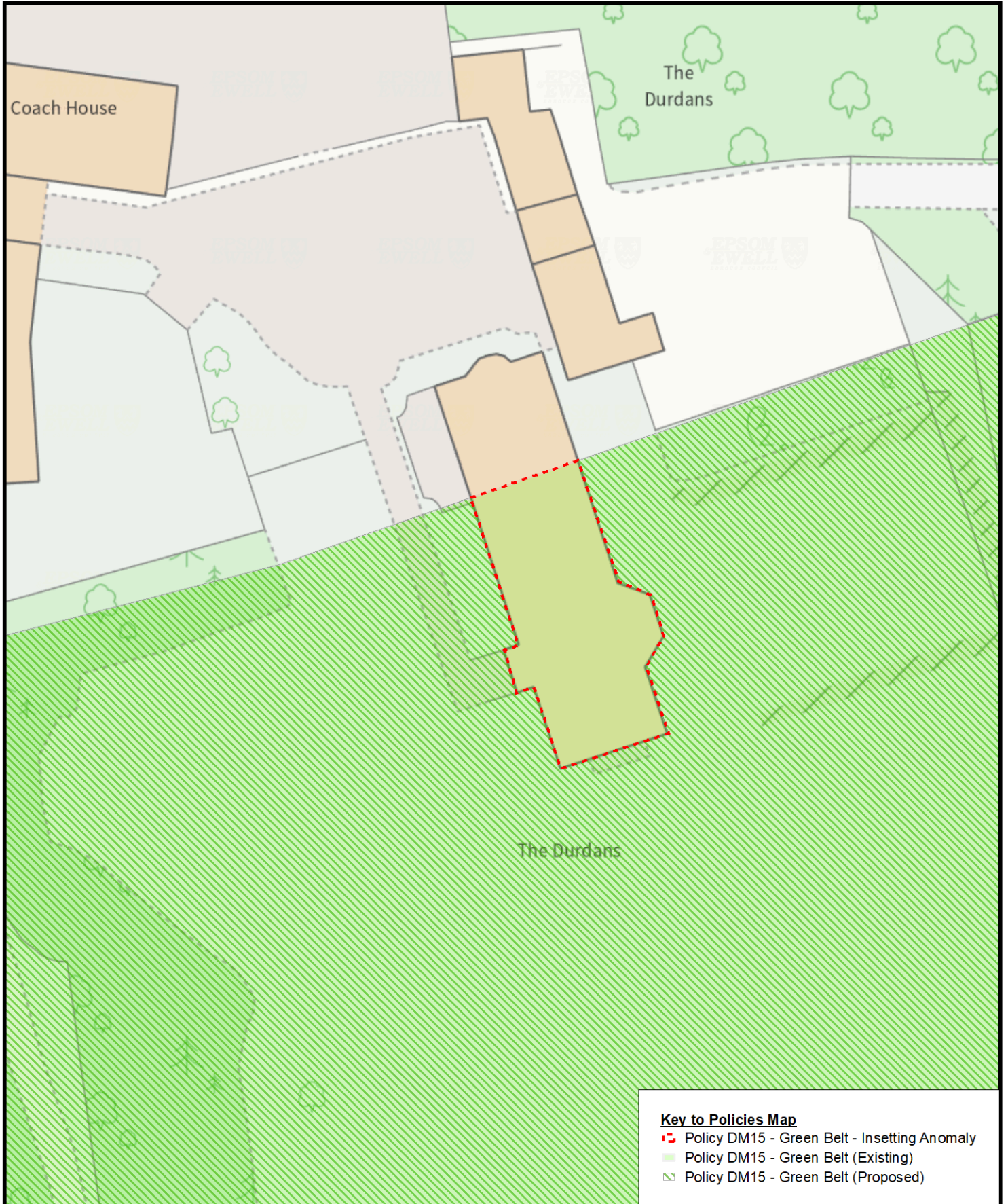
## Anomaly Inset (Christ Church Road greenspace)





# Green Belt

## Anomaly Inset (Durdans Stables)

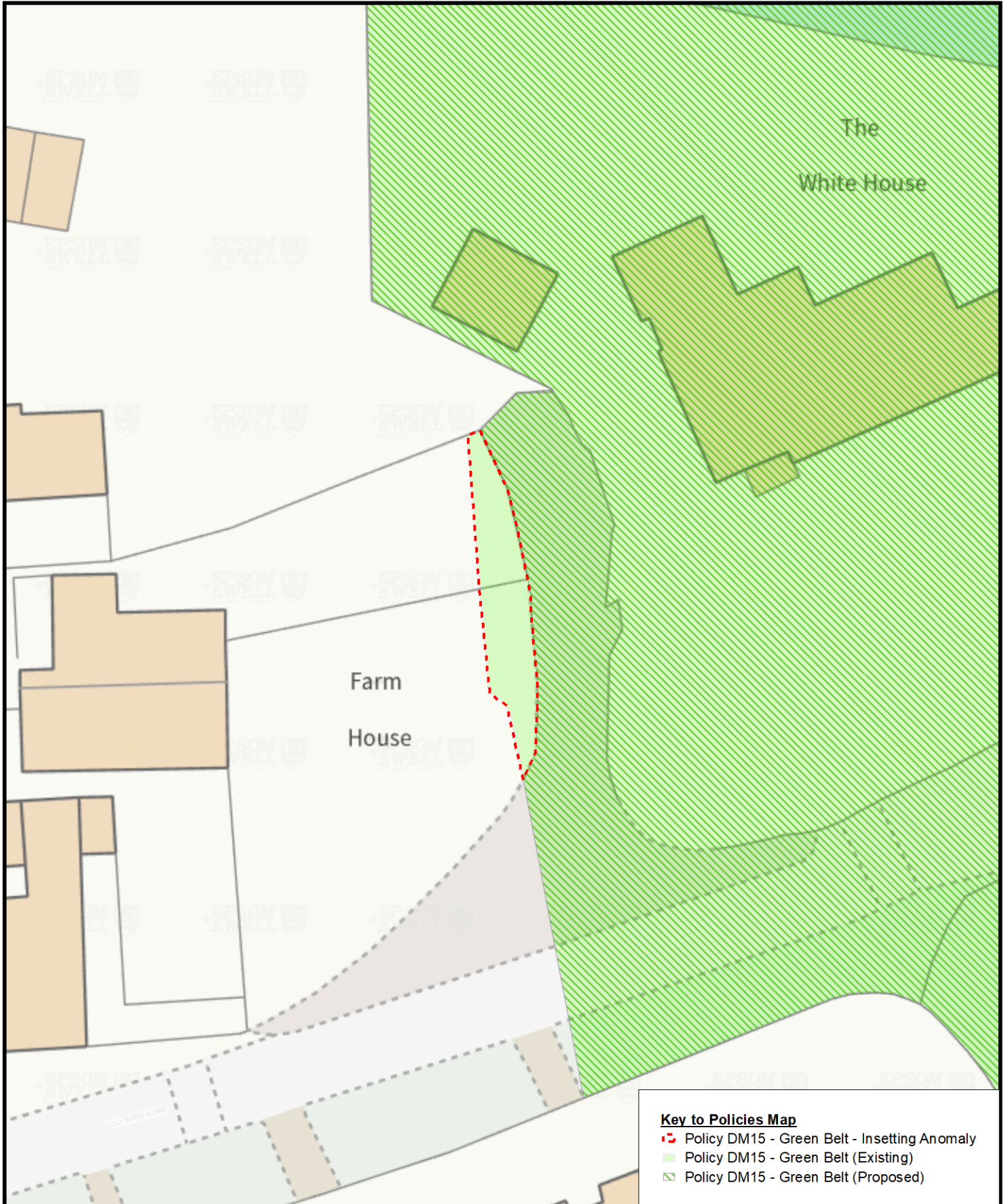






# Green Belt

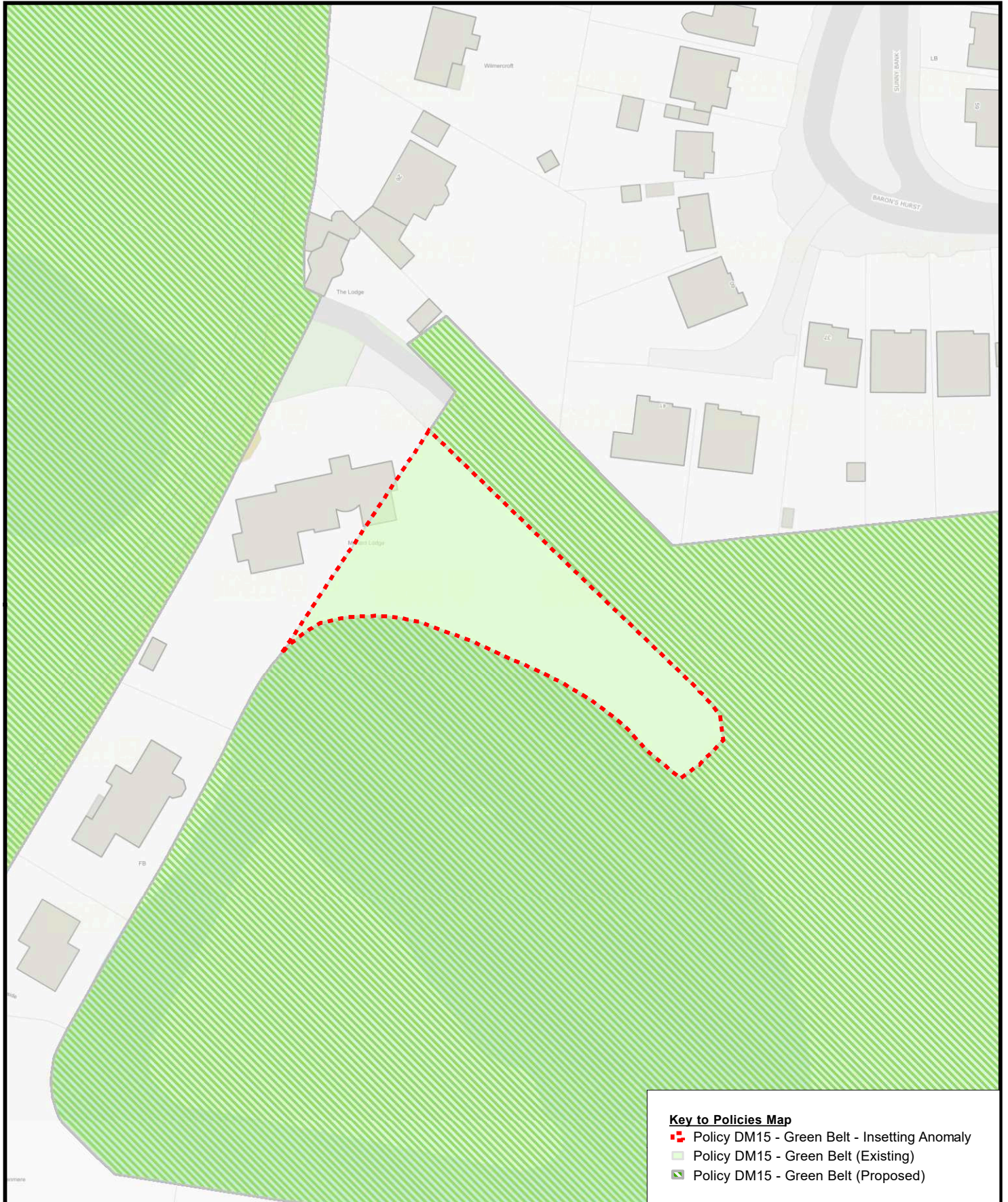
Anomaly Inset  
(Old Barn Road)





# Green Belt

## Anomaly Inset (Wilmerhatch Lane - Mallard Lodge)





# Green Belt

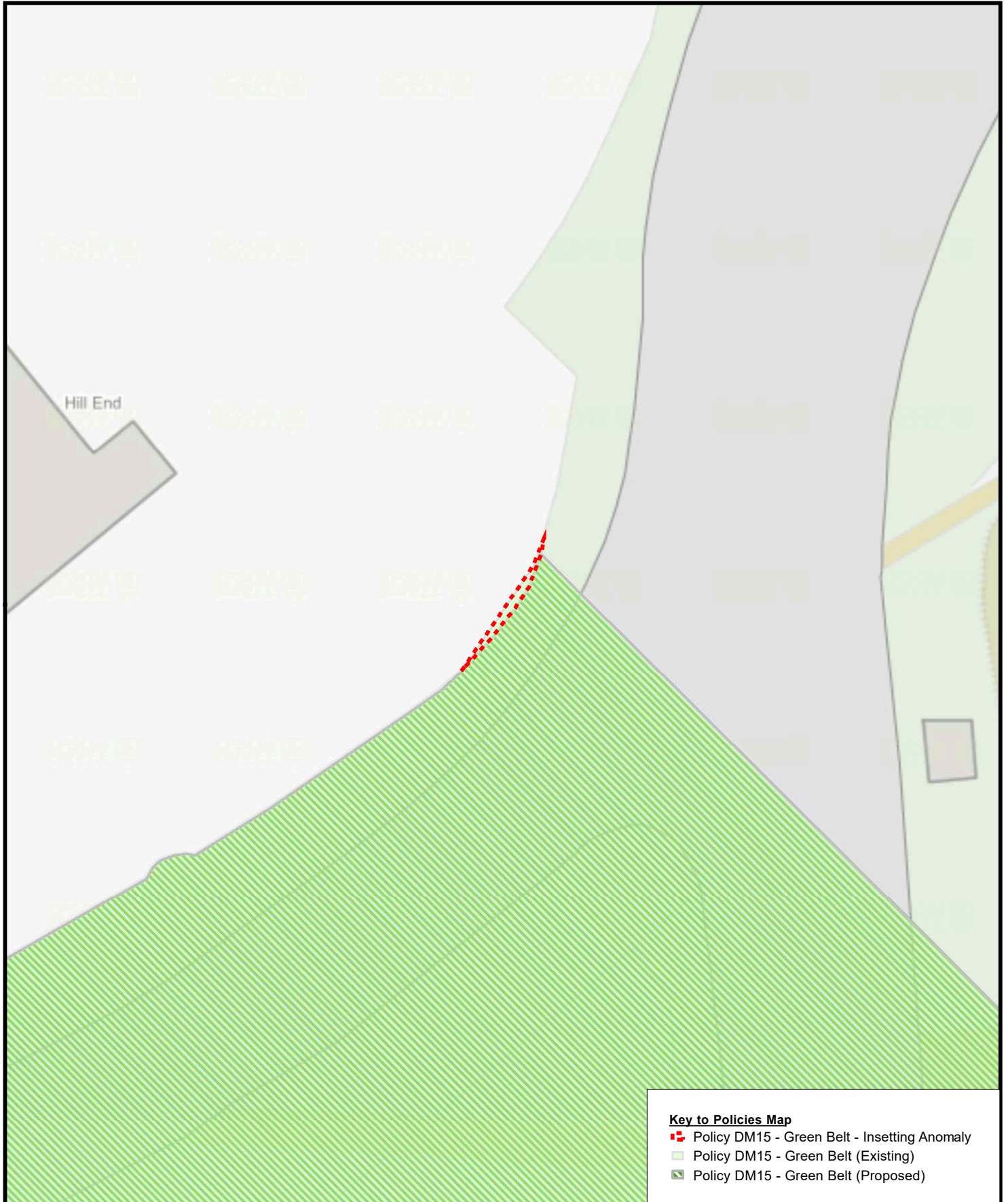
## Anomaly Inset (Wilmerhatch Lane - multiple)





# Green Belt

Anomaly Inset  
(Woodcote Side / Woodcote Green Road)



# Green Belt

## Anomaly Inset (Woodcote Side)



**Epsom and Ewell**  
**Local Plan**  
2022-2040



Planning Policy Team  
Epsom and Ewell Borough Council  
Town Hall  
The Parade  
Epsom  
KT18 5BY  
Tel: 01372 732000



[www.epsom-ewell.gov.uk](http://www.epsom-ewell.gov.uk)  
01372 732000