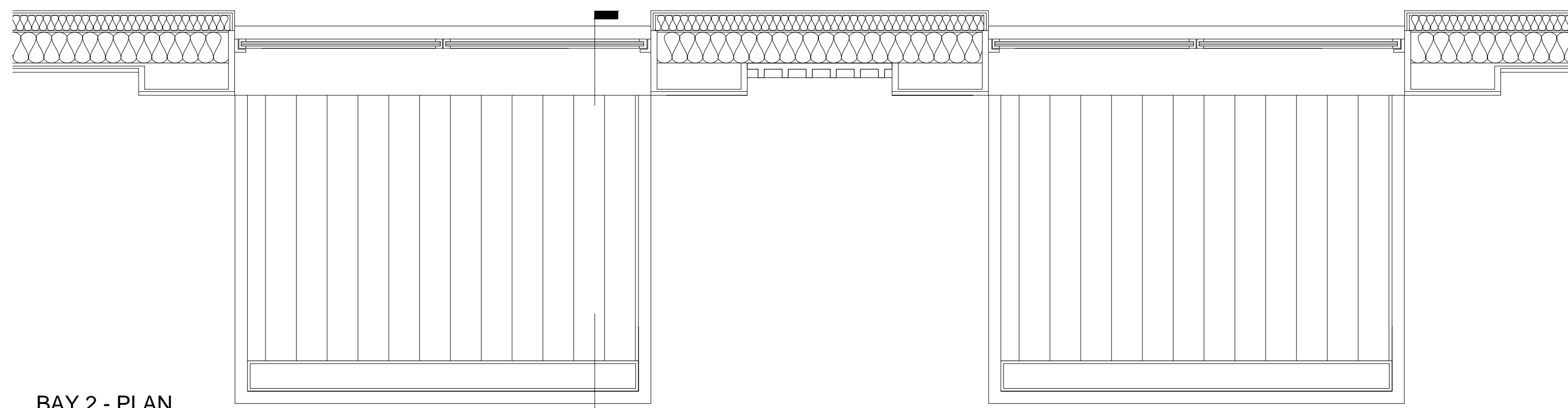




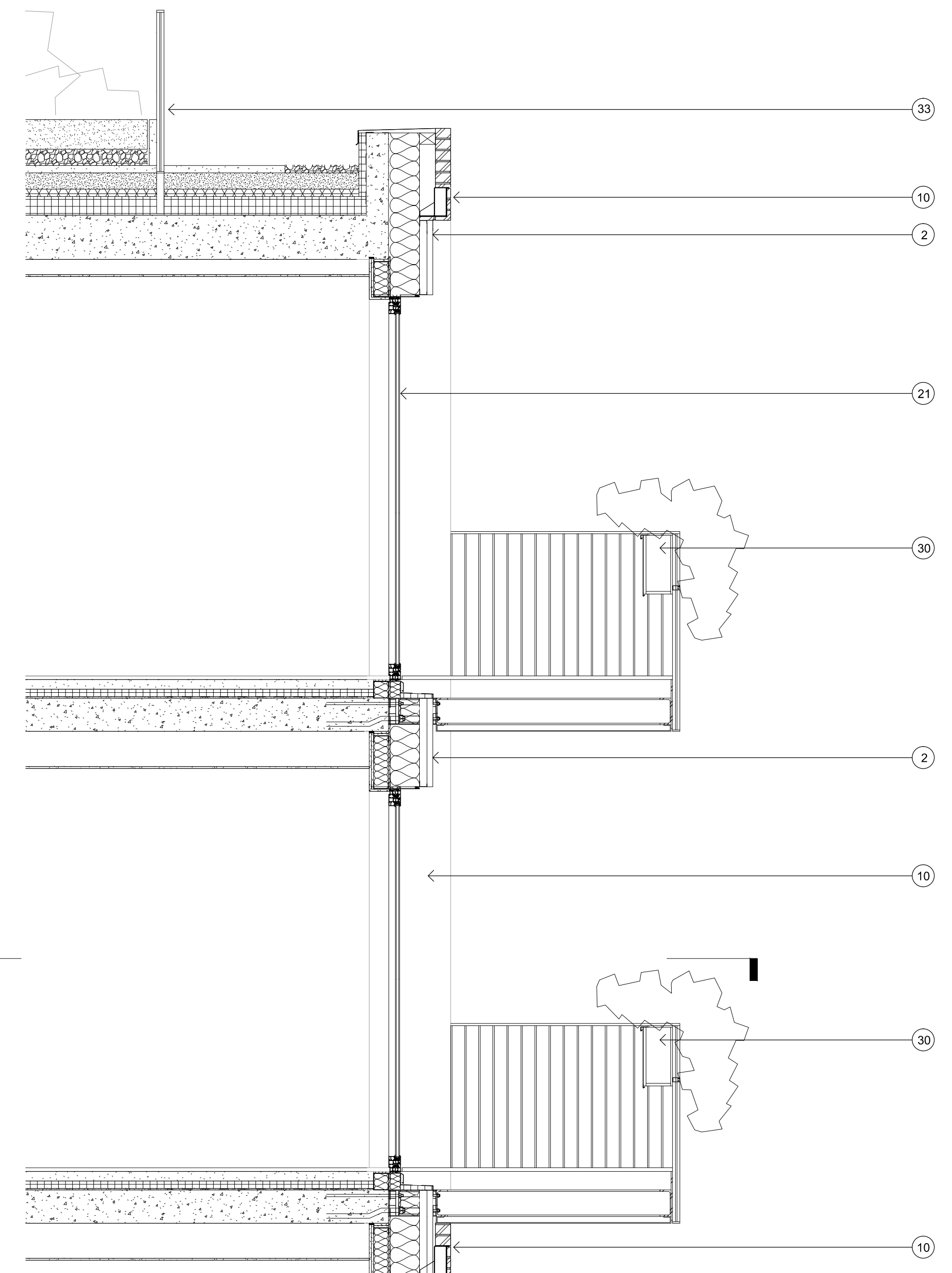
BAY 2 - ELEVATION

1 : 25



BAY 2 - PLAN

1 : 25



BAY 2 - SECTION

1 : 25

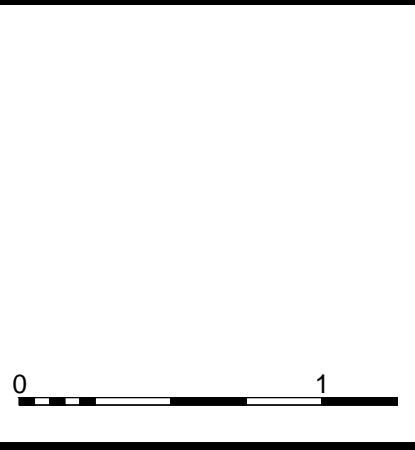
IMPORTANT NOTES:
Do not scale from drawings. All dimensions shall be checked on site before commencement of work. All discrepancies shall be brought to the attention of the Architect. Larger scale drawings and written dimensions take precedence. This drawing is copyright and the property of the author, and must not be retained, copied or used without the express authority of MARCHESE PARTNERS INTERNATIONAL PTY. LTD.

REVISION	DATE	DESCRIPTION	BY
-	20/12/19	PLANNING APPLICATION SUBMISSION	DR

- MATERIALS KEY**
- Polyester powder-coated (PPC) cladding components**
 - 1. PPC aluminium standing seam effect cladding.
 - 2. Profilled PPC aluminium cladding inset panel.
 - 3. Profilled PPC aluminium spandrel panel.
 - Brick cladding components**
 - 10. Facing stretcher bond brickwork cladding.
 - Door & window components**
 - 20. Metal frame glazed window.
 - 21. Metal frame glazed door.
 - 22. Draft lobby with glazed sliding door.
 - 23. Metal louvre facing doors (WPD).
 - Misc components**
 - 30. Metal fin balcony balustrade with removable planter.
 - 31. Metal fin Juliet balustrade with removable planter.
 - 32. Metal fin balustrade.

marchesepartners

Marchese Partners International Pty Ltd
 Metal Box Factory, Unit GG. 212. 30 Great Guildford Street. London SE1 0HS
 P +44 020 735 9755 E info@marchesepartners.com
 www.marchesepartners.com
 London · Sydney · Brisbane · Canberra · Melbourne · Adelaide · Perth
 · Kuala Lumpur · Auckland



CLIENT
GUILD LIVING

PROJECT
GUILD LIVING AT EPSOM

DRAWING TITLE			
TYPICAL BAY STUDY - BAY 2 BOLT ON BALCONY DETAIL			
SCALE 1:25@A1 1:50@A3	DATE 20.12.19	DRAWN PA	CHECKED DR
JOB 18120	DRAWING 18120-MPI-XX-ZZ-DR-A-21_301	REVISION	-

PLANNING
NOT FOR CONSTRUCTION