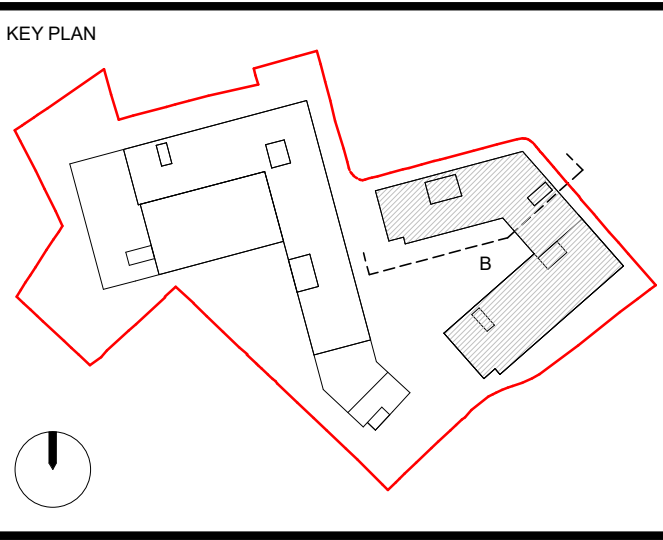


ELEVATION 1B-1B - BUILDING B COURTYARD SOUTH  
1 : 200

FACADE WIP WINDOW LOCATION FOR INFORMATION ONLY

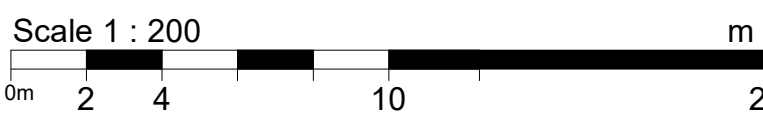
INDICATIVE LANDSCAPE

REV.	DATE	FOR PLANNING	DR
-	05-02-21	FOR PLANNING	DR
PURPOSE OF ISSUE		DESCRIPTION	BY
PLANNING			STATUS



- NOTES
1. ALL DIMENSIONS IN MILLIMETERS (mm) AND LEVELS IN METERS (m) ABOVE NATIONAL DATUM.
  2. DO NOT SCALE FROM THIS DRAWING. ONLY WRITTEN DIMENSIONS SHALL BE USED.
  3. THIS DRAWING IS TO BE READ IN CONJUNCTION WITH ALL RELEVANT ARCHITECTURAL DRAWINGS AND SPECIFICATIONS AS WELL AS ALL RELEVANT INFORMATION FROM THE STRUCTURAL, MEP AND CIVIL ENGINEERS.
  4. THIS DRAWING HAS BEEN PREPARED IN ACCORDANCE WITH THE SCOPE OF APPOINTMENT WITH THE CLIENT AND IS SUBJECT TO THE TERMS OF THAT APPOINTMENT AND SHOULD ONLY BE USED FOR THE PURPOSE FOR WHICH IT IS INTENDED.

- MATERIALS KEY
- Polyester powder-coated (PPC) cladding components**
1. PPC aluminium standing seam effect cladding.
  2. Profiled PPC aluminium cladding inset panel.
  3. Profiled PPC aluminium spandrel panel.
- Brick cladding components**
10. Facing stretcher bond brickwork cladding.
- Door & window components**
20. Metal frame glazed window.
  21. Metal frame glazed door.
  22. Draft lobby with glazed sliding door.
  23. Metal louvre facing doors (WFD).
- Misc components**
30. Metal fin balcony balustrade with removable planter.
  31. Metal fin Juliet balustrade with removable planter.
  32. Metal fin balustrade.
  33. Metal louvre plant screen.



**marchese partners**

Sydney · Brisbane · Canberra · Melbourne · Adelaide  
Kuala Lumpur · Auckland · Christchurch · London  
Madrid

Marchese Partners International Pty Ltd | Metal Box Factory | Unit  
GG.212 30 | Great Guildford St | London SE1 0LS | United Kingdom  
P +44 020 3735 9755 | W www.marchesepartners.com

CLIENT	GUILD LIVING
PROJECT	GUILD LIVING @ EPSOM

DRAWING TITLE	ELEVATION 1B-1B - BUILDING B COURTYARD SOUTH
DISCIPLINE	ARCHITECTURE
SCALE @ A1	1 : 200
DRAWN	CS,MA
DESIGNED	AK
CHECKED	DR
APPROVED	RK
DRAWING No	EPS001-MPI-XX-EL-DR-A-20-301
REV	-