



1.0

Responding to Covid-19

National Pandemic - Impact on Care Homes**Impact of Covid-19 on Care Homes**

The impact on COVID19 on care homes across the Globe has been both severe and tragic. The UK's ONS data has indicated a disproportionate amount of deaths have occurred in care homes due to the Coronavirus, this pattern has also been consistent in other countries.

NHS Engagement

Guild Living have established links to local NHS stakeholders including the larger General Hospitals within their localities. The communication between acute healthcare establishments is fundamental to support the identification, prevention, and resolution to such threats.

Existing care homes around the world are typically places where physical distancing is almost impossible. It's like a perfect storm; a susceptible population where carers are not well supported or trained sufficiently in disease control. Many of the care home staff are care assistants with minimal medical knowledge and with limited access to PPE.

Dedicated second drop off and separate lobby provides separate access to care floor.

The provision of a separate drop off area provides a separate controlled access point to the care floor, with it's own reception lobby/lounge. This allows for physical distancing and in the event of a pandemic such as Covid-19 where the aged and vulnerable are at greater risk, visitor testing measures.



- Second drop-off to care floor level
- Reception lounge and lift lobby serving CaRE floor

1.0

Responding to Covid-19

National Pandemic - Design Mitigation Measures**Care homes at greater risk**

In the UK, many care homes are not equipped to deal with infectious diseases such as Covid-19. Services often privately operated, supporting those whose care is funded through local authorities, suffer from:

- poor design and not built to allow for social distancing,
- insufficient PPE for staff or visitors,
- under equipped staff to deal with processes required to deal with pandemics,
- a lack of appropriate testing equipment
- inadequate management procedures to deal with infectious diseases or outbreaks.

Care floor design

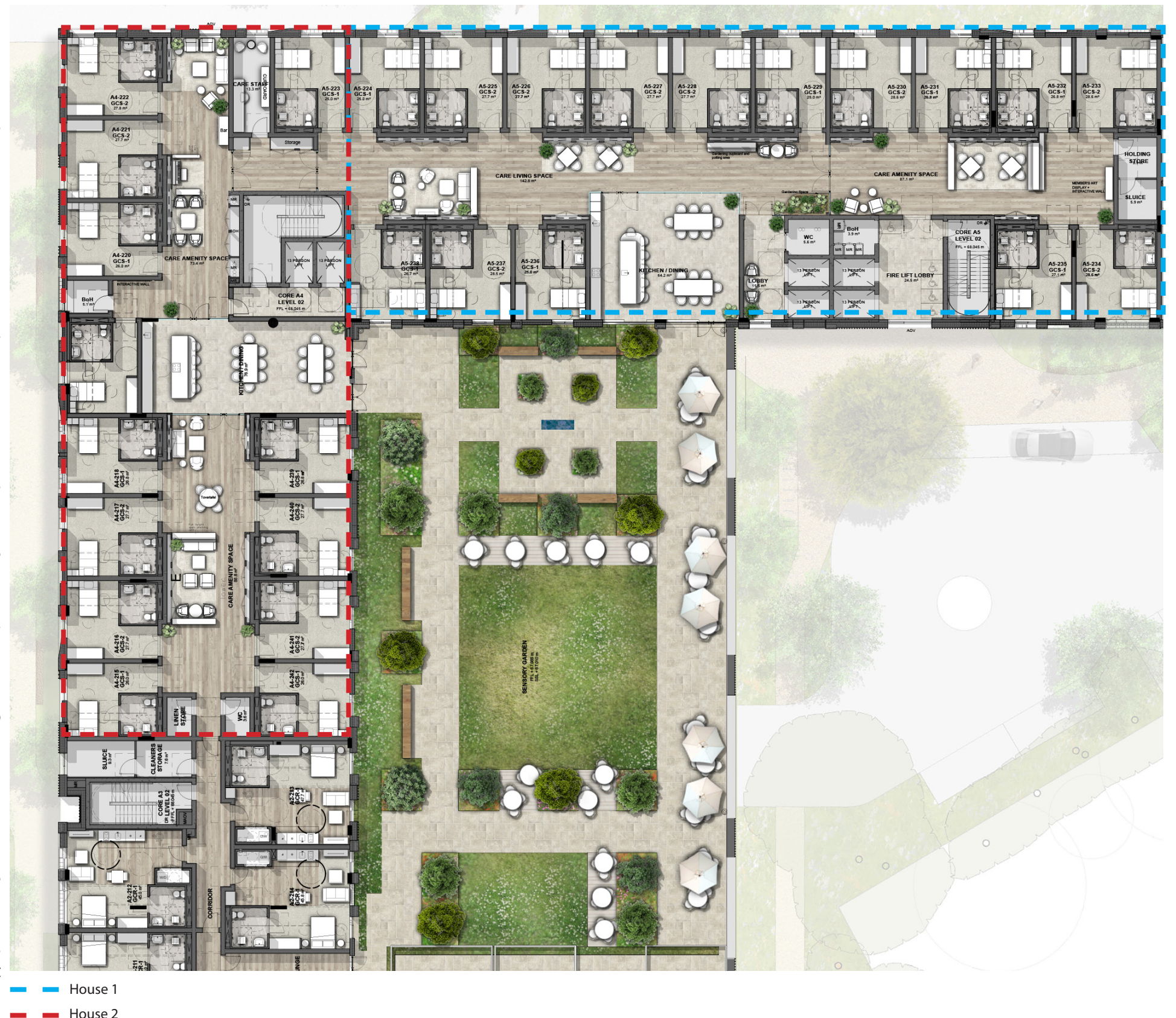
Guild Communities have been designed to enable social distancing as required during the current COVID19 crisis. The higher CaRE (Care and Respectful Enablement) community, each household is made up of a small number of care suites 15 and 13 for each Member, and reduces the risk of infection through better containment.

The care floor is designed to assist with measures for disease control, including.

- Dividing the care floor into 2 houses.
- Separate lobby access to all cores which, provide greater control to isolate off each house if required.
- The care floor has been designed with its own outdoor space.

Staffing

Guild CaRE staffing will also reflect a focus on ensuring Members receive the highest standards of support. High numbers of teams both day and night will allow a more personalised approach but also limit any potential increase in exposure of risk from staff to member by dedicating teams to smaller groups of Members to aid containment and limit contact throughout the care floor.



1.0

Responding to Covid-19 National Pandemic - Research

Access to separate outside space

The design of a separate sensory garden and outdoor amenity space which can be isolated from the wider development ensures Members wellbeing. This allows members and teams to maintain positive physical and emotional health during challenging times.

The outdoor space will be managed and divided according to social distancing controls and times staggered to control the risk of spread between houses and groups within each house.

Protection for members

A specialist design approach to CaRE and Wellness Technology within Guild communities has been created to obtain a key number of medical biomarkers. Guild Living has been working with design specialists to develop a protection system for Members, Staff, and visitors to Guild Living communities through the establishment of the "Guild Shield".

The Guild Shield programme is led by academic expertise and the latest approach to biosecurity technology that will provide private testing to all those at risk to safeguard regarding containment. Early indicators and key vital signs are incorporated into our health applications to ensure those using the technology will be alerted.



Care Floor Outdoor Amenity



Care & Security

