

GUILD LIVING at EPSOM

19/01722/FUL

Design Response to EEBC Planning Comments 17/04/2020
Car Park Facade

24 April 2020

1.0

Submitted Design

Facade Bay Study - APS Carpark Elevation 3D [4.22 in validated DAS]



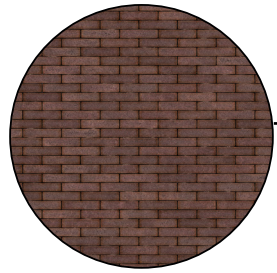
Dark grey PPC aluminium rainscreen cladding



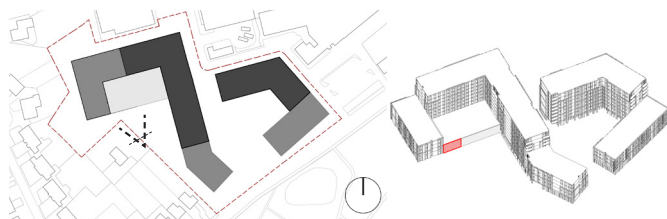
PPC aluminium perforated metal cladding to 2 storey carpark provides natural ventilation



PPC aluminium roller shutter door to APS parking lift, with secure access



Brickwork A for frame
30% Dark Mix
70% Light Mix
American Brick Bond



19/01722/FUL

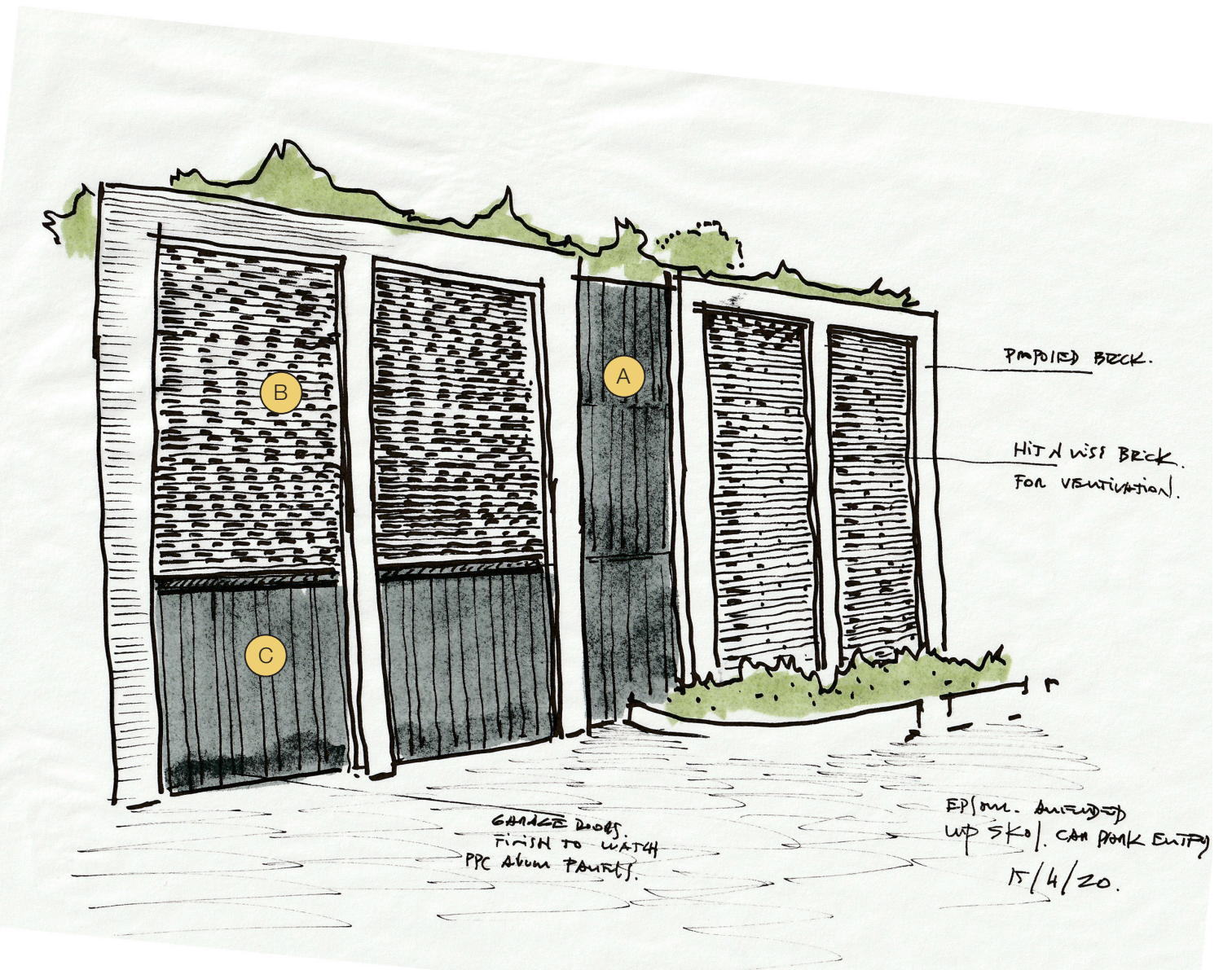
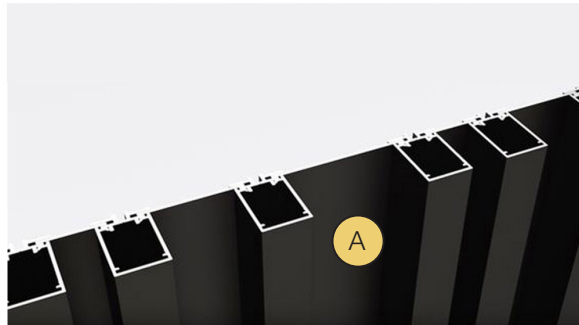
Comments from EEBC design officer Virginia Johnson & Lance Penman
17/04/2020.

...The car park entrance shown on 4.22 is harsh and industrial in appearance and the details of the aluminium surface and the garage doors should be reconsidered.

2.0

Design in Response to Planning Comments

Facade Bay Study - APS Carpark Elevation Concept



- A PPC aluminium rainscreen cladding colour to match proposed brick
- B Example of Jali brick wall detail
- C Example of automated metal door, colour to match proposed brick

2.1

Design in Response to Planning Comments

Facade Bay Study - APS Carpark Elevation 3D

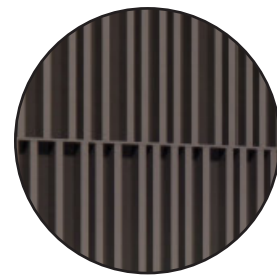
In response to planning comments received 17/04/2020 regarding the car park entrance as illustrated in the DAS on 4.22 'harsh & Industrial' the proposed design amendment considers introducing a vertical metal fin expression and aesthetic as a continuation of the balcony balustrade design adopted on the residential elements of the facade.

Subtitle plays with the spacing of the fins create further variation and interest within the design of the car park facade whilst providing sufficient free area for supply air into the car park as part of the ventilation strategy.

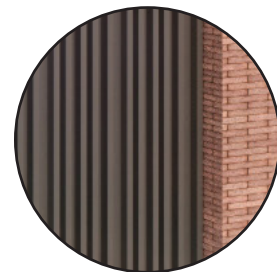
The introduction of additional brick piers breaks up the facade further inline the residential elevations increasing the amount of brick within the elevation.



Dark grey PPC aluminium rainscreen cladding



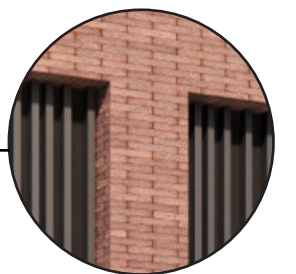
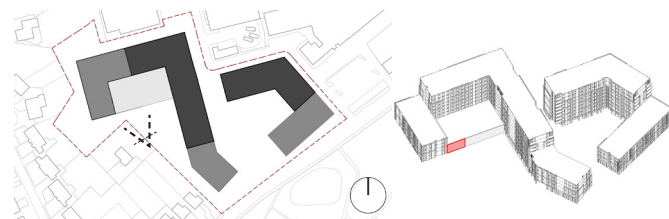
Vertical metal fins to 2 storey car park provides natural ventilation. Colour to match PPC aluminium cladding



PPC profile metal automatic doors to match colour of brick to APS parking lift, with secure access



Brickwork A for frame
30% Dark Mix
70% Light Mix
American Brick Bond



Additional brick pier added to enhance facade rhythm and emphasise vertical expression

2.2

Design in Response to Planning Comments

Facade Bay Study - APS Carpark Elevation 3D

