

COUNCIL TAX




2025-2026

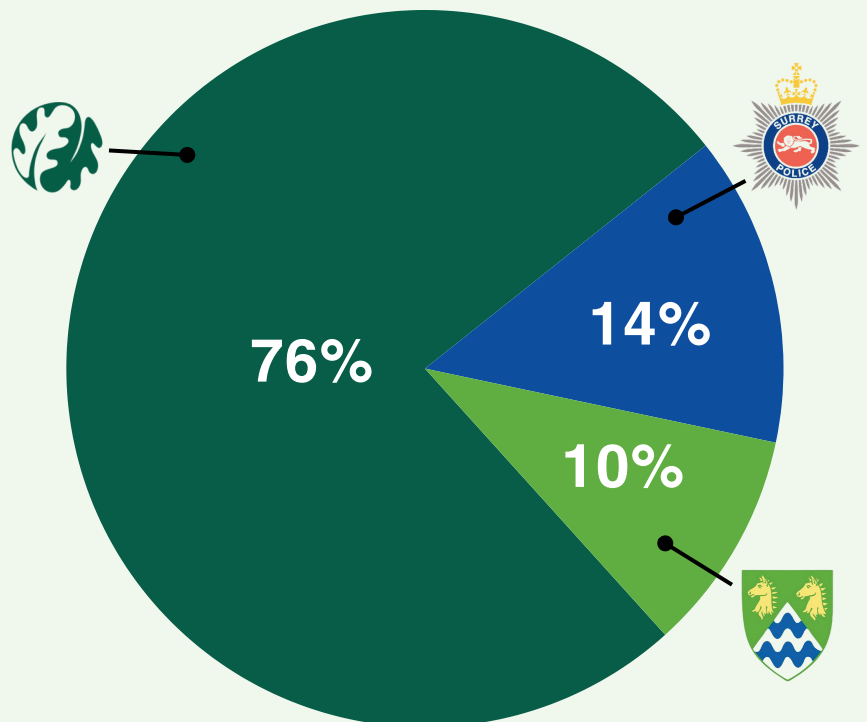


Your Council Tax pays for services provided by Surrey County Council, Surrey Police Authority and Epsom & Ewell Borough Council.

Where your Council Tax goes:

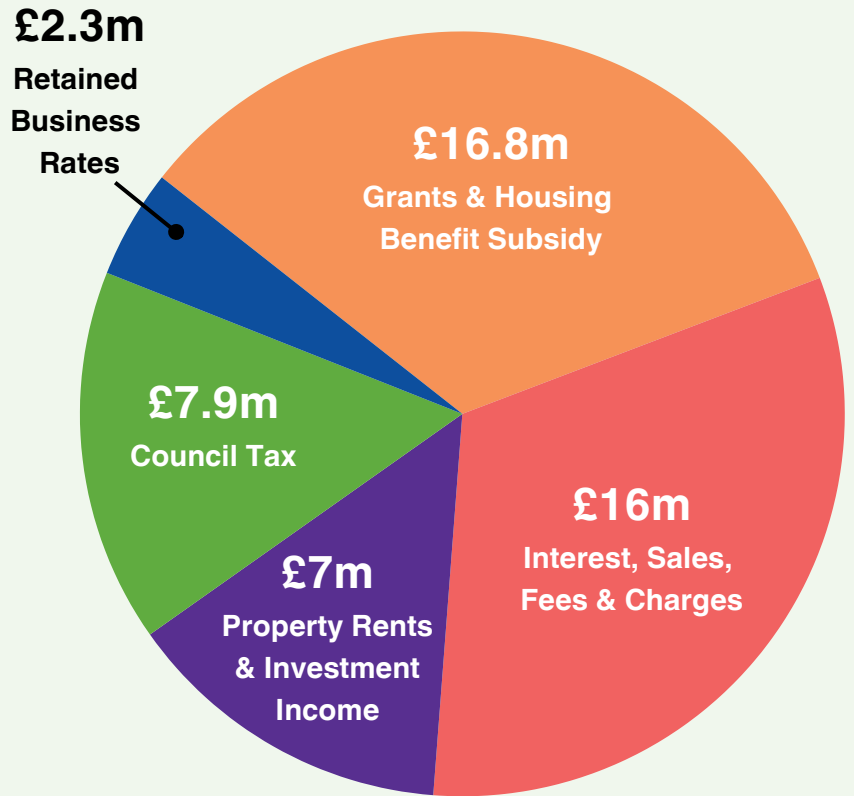
For every £1 of Council Tax:

-  **Epsom & Ewell Borough Council** receives just 10p.
-  **Surrey County Council** receives 76p.
-  **Surrey Police Authority** receives 14p.



Where Epsom & Ewell Borough Council gets its money from:

The council needs to ensure that services are delivered in a cost-effective way, which meets the needs of our residents but at a price the council can afford. Epsom & Ewell Borough Council is funded by five separate income streams and with this income the council must fulfil its statutory duties as well as deliver the council's priorities. Our 2025/26 income is £50 million.



Council Tax bands

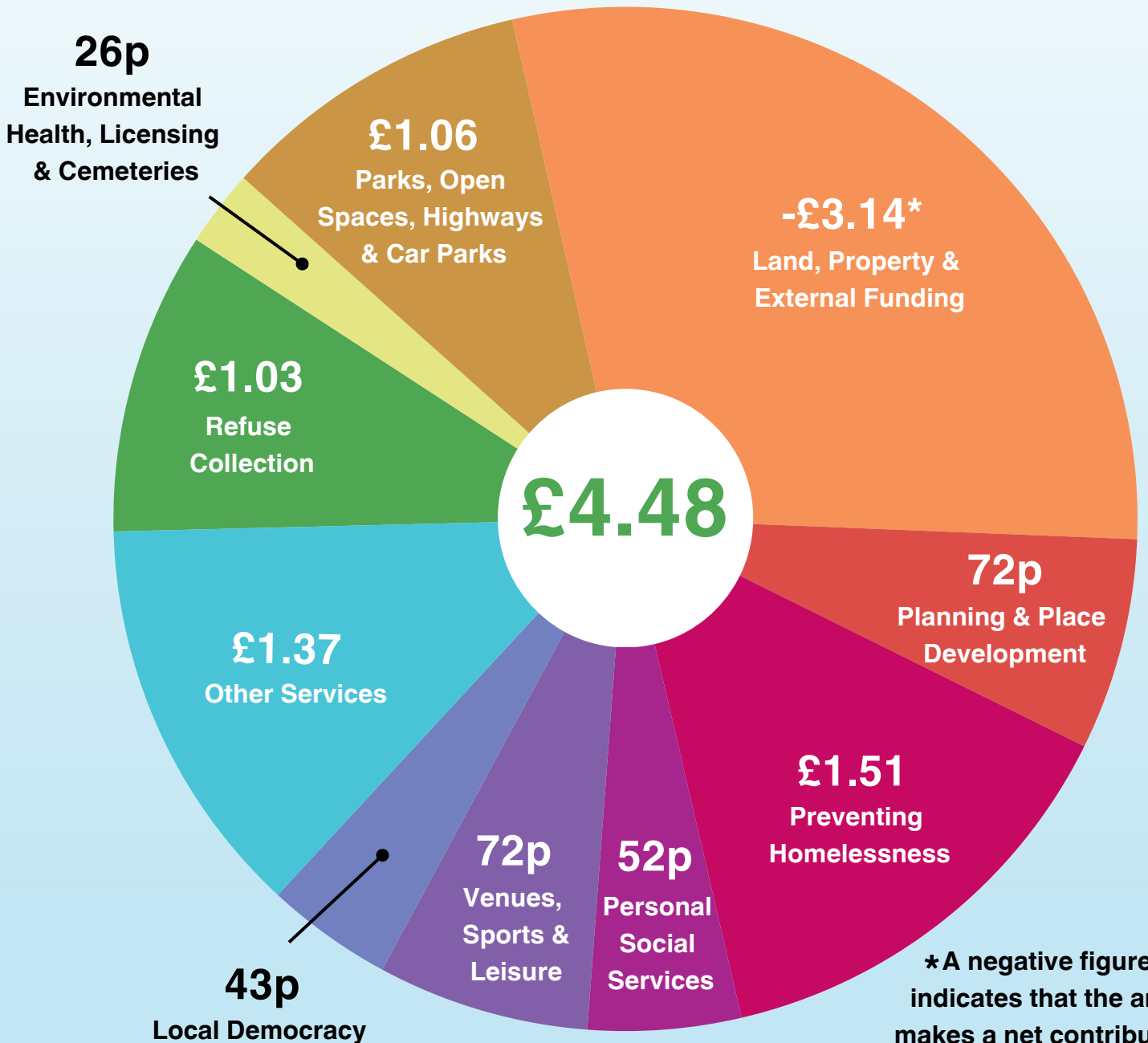
Council Tax is charged at eight different levels, (bands A to H) depending on your property value. The table below shows the Council Tax breakdown and the total Council Tax chargeable for each property band for 2025/26.

	Total	Epsom & Ewell Borough Council	Surrey Police Authority	Surrey County Council
A	£1,611.23	£155.28	£225.05	£1,230.90
B	£1,879.76	£181.16	£262.55	£1,436.05
C	£2,148.30	£207.04	£300.06	£1,641.20
D	£2,416.84	£232.92	£337.57	£1,846.35
E	£2,953.91	£284.68	£412.58	£2,256.65
F	£3,490.99	£336.44	£487.60	£2,666.95
G	£4,028.07	£388.20	£562.62	£3,077.25
H	£4,833.68	£465.84	£675.14	£3,692.70

Epsom & Ewell's proportion of the Council Tax for 2025/26 for a Band D property is

£4.48 per week

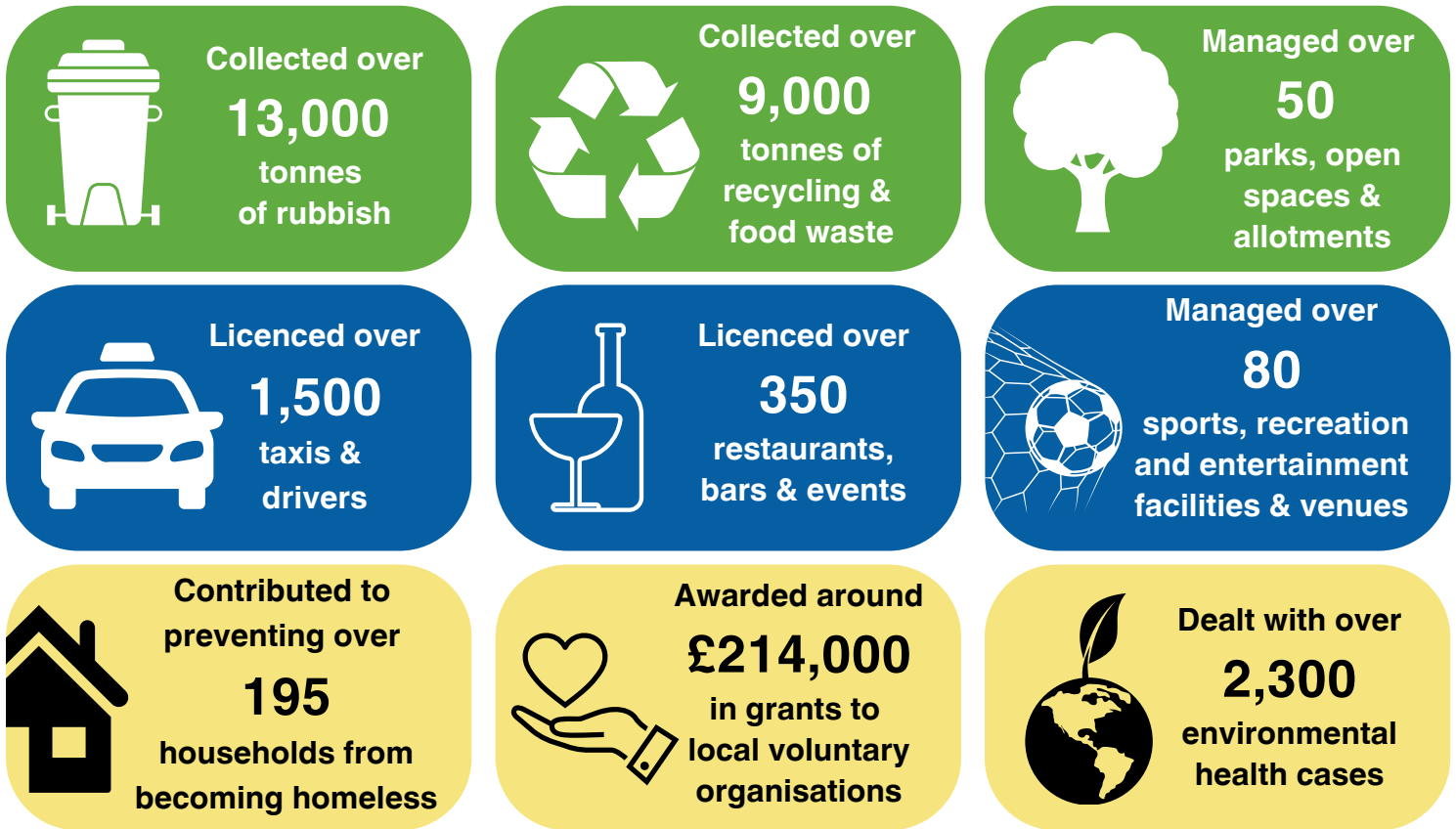
How your money is spent on delivering key services:



*A negative figure indicates that the area makes a net contribution towards the cost of delivering services.



Here are a few things we've done with our 10 pence share over the past year:



Want to change details of people named on your bill?

We can only add the names of people who have the same legal interest in the property as you, e.g. joint tenants or a couple living together.

Please e-mail the details of the new people and the date from which they moved in to counciltax@epsom-ewell.gov.uk.

Moving into or around the borough?

If you are moving address it is important that you tell us when you move house so that we can ensure you are billed correctly. Follow the QR code to our website and fill in the Moving Address Notification form.



Aware of the discounts?

The amount of Council Tax to be paid can be reduced by certain discounts and exemptions, this includes:

- Single person discount
- Student discount
- Care leavers discount
- And much more...

Follow the QR code for more information.



Need support with your Council Tax?

Residents of pensionable age and on low income may qualify for help via our Council Tax Support Scheme.

Follow the QR code for full details of the scheme on our website or telephone **01372 732000**.



Visit epsom-ewell.gov.uk/council-tax for more information