

Borough Insight

ISSUE 77

Vision for the future



Keeping **YOU** informed...



Epsom & Ewell

*A local Estate Agent with
local knowledge*

we are **The Local Agent**

For a free valuation and the best rates around, call us on:

01372 253 252

sales@thelocalagent.co.uk



The **local** agent

thelocalagent.co.uk



Contact us

Borough Insight is published by Epsom & Ewell Borough Council for residents and delivered free of charge to households in the borough.

If you have any queries on its contents please contact: **The Editor, Borough Insight, Epsom & Ewell Borough Council, Town Hall, The Parade, Epsom, Surrey KT18 5BY**

Phone: **01372 732000**

Email: **boroughinsight@epsom-ewell.gov.uk**

Designed and printed by: The PPL Group, Global House, 1 Ashley Avenue, Epsom, Surrey KT18 5AD
Tel: 01372 743377

Email: paul.dasilva@theplgroup.com

Borough Insight is printed on paper from sustainable sources. Please read and recycle this copy.



Advertising opportunities in Borough Insight

Would you like the opportunity to promote your business to 32,000 households? Epsom & Ewell Borough Council offers advertising space at competitive rates in Borough Insight magazine.

For further information contact The PPL Group on 01372 8478 89 or email paul.dasilva@theplgroup.com

Epsom & Ewell Borough Council does not accept responsibility for, sponsor or endorse any products or services offered by advertisers in this magazine.

e-Borough Insight

For the latest events, community information and lots more delivered straight to your inbox each month, subscribe to e-Borough Insight at <https://insight.epsom-ewell.gov.uk/subscribe>

Social media

For the latest borough council news and information, alerts and updates, why not visit our website www.epsom-ewell.gov.uk

Find us @EpsomEwellBC on:



Mayor's message



Councillor John Beckett

Over the past few months, the Mayoress and I have undertaken numerous events in Epsom and Ewell and represented the borough at activities throughout Surrey.

On Christmas Day, we visited the three emergency services in Epsom and attended two 'Together at Christmas' community events. We joined the St Mary's Morris Men in Ewell on Boxing Day who danced to raise money to support my three chosen charities. Although the weather was wet and grey, we had a fantastic time and I took part in their annual Mummers' Play.

I have hosted a number of school and scouting troop visits to the council chamber which involved conducting mock council meetings. These resulted in a number of interesting debates and questions. We also attended several school prize givings, to celebrate the successes of the borough's young people, as well as important anniversaries of local organisations, such as the 90th anniversary of the Second Ewell Scouts.

Throughout my time as Mayor, I have come to recognise the significant role the charity and voluntary sector plays within our community. Currently, Epsom and Ewell is home to over 250 charitable organisations.

One of my Mayoral highlights was hosting receptions to celebrate the contribution of our Active Citizens and some of the many volunteers whose positive impact upon the borough, the county and the country is immeasurable. Their willingness to selflessly provide help to others speaks of both an individual's strength and the quality of their character. When you volunteer, you are making a commitment to share that most precious of resources – your time, to make life better for those who are in need. I would like to personally thank the volunteers within Epsom and Ewell and highlight how much your dedication is appreciated. It is important for you to know that what you are doing is making a difference.

I would like to thank all of the organisations that have supported me over the last nine months and a huge thank you to my Charity Committee and especially the Chair, Barbara Warwick. They have helped raise awareness and valuable funds for my three charities - the Alzheimer's Society, Motor Neurone Disease Association and Epsom PHAB. For more information visit www.mayorscharitiesepsom.org.uk



Our planet matters

Climate change is now accepted by most scientists and governments as the most serious environmental challenge facing society.

There is clear scientific evidence that the activities of people and organisations have been having a significant detrimental impact on the climate, the environment and biological life.

We have adopted an ambitious plan to address the negative impact on the environment from activities undertaken within the borough by us and others in the local community.

The action plan was created and developed by a working group comprising of members from all four of the local political groups represented on the council (Residents Association, Labour, Liberal Democrats and Conservative) and approved unanimously by all councillors.

The main aim of our climate change action plan is to address this global issue at a local level.

The action plan addresses a wide range of subjects from increasing the number of electric vehicle charging points within our community to boosting biodiversity. We're going to lead by example, by no longer having single-use plastics within our venues wherever possible, moving progressively to all-electric council vehicles and ensuring our electricity comes from 100% renewable resources. We're also going to work with others, such as the county council, to help improve public transport including promoting better walking and cycling routes.

As part of the action plan, we have adopted a 15 year target for the council to become net carbon neutral.

Our climate action plan is not a static document and we continue to work on understanding and confirming the individual costs within the plan and extent of carbon reduction the actions will achieve.

Going forward, new technologies and new research will also lead to changes in what we can achieve.

What can you do?

The climate crisis is not something that any of us are insulated from. While major national governments and international organisations can plan for how we meet this challenge head on, action is incumbent on us all, as communities, organisations and as individuals.

- **On your bike;** increase your fitness, enjoy mental health benefits and tackle climate change by cycling or walking whenever possible, rather than using the car.
- **Use public transport;** the average bus can accommodate 60 passengers, that's up to 60 less cars on the streets contributing to greenhouse gases.
- **Take the train, not the plane;** flying is one of the fastest growing sources of greenhouse emissions. Try holidaying in the UK or travelling by rail. For business, consider video conferencing.
- **Eat a climate-friendly diet;** eat fewer or smaller portions of meat and dairy, buy seasonal food, produced as locally as possible, to reduce food miles and don't waste food.
- **Save energy;** okay, not the most original idea but it's as relevant as ever - saving energy not only saves you money, it also helps to cut emissions.
- **Cut consumption;** Everything we use as consumers has a carbon footprint so avoid single-use items and fast fashion, and try not to buy more than you need.
- **Recycle more;** in addition to what we can collect in your recycling collections there are local opportunities for recycling various other items – check out our website recycling pages.

A place unlike anywhere else

Somewhere with the best that
life has to offer, all available on
your doorstep.



The new vision, developed by local people, recognises the borough's extraordinary potential as a **creative and vibrant place**.

All successful places have one thing in common. They all have a clear view about where they are going and what they want to achieve. Having a keen eye on the future helps shape the actions we take today to make sure they really count.

The future of any place is influenced and shaped by its past. Epsom and Ewell is fortunate to be steeped in a rich history; from its humble beginnings as a Saxon settlement to the location of choice for Henry VIII's Nonsuch Palace, later becoming a fashionable Georgian Spa retreat, the home of the Derby (which continues to be one of the greatest sporting events in the world) and a thriving Market Town that we continue to enjoy today.

The borough has long been a place renowned for commerce and opportunity, the exchange of ideas and learning, as well as a place of solace and wellbeing. The borough also enjoys a strong and growing economy, excellent connectivity to the Capital and beyond, as well as access to a diverse cultural offering, including a popular theatre, community spaces and award-winning leisure facilities.

The new vision builds on the borough's many inherent strengths and characteristics: the beautiful parks and nature reserves; top-performing schools and further and higher education centres; a dedicated performing arts college, as well as home to the only business school in the country for the creative industries.



“I want to be in a place that knows where it's going and what future it wants”

It is often said that the future is what you make of it, and in Epsom and Ewell we are fortunate that the future has been shaped by the people who live, work and study here.

The new long-term vision for the borough has been drawn from the views of local people through the largest engagement exercise ever undertaken in Epsom and Ewell. This vision therefore reflects the hopes and aspirations of local people as well as the organisations working in the borough who all have a stake in its future success.

The result of the extensive public consultation is five distinct themes; these come together to create the vision for Epsom and Ewell:



Green & Vibrant

where people care deeply about the environment, bio diversity and climate change, a place renowned for its fantastic green spaces, environmentally friendly buildings and sustainable transport options, including extensive cycling and walking routes.



Opportunity & Prosperity

a place that invests in the future, a place of opportunity whatever your background, with thriving businesses including shops and the horse racing industry, affordable homes for families and local workers, excellent education facilities and where ambition and enterprise is nurtured.



Safe & Well

a friendly and safe place whatever the time of day, where there's a strong community spirit and support in always on tap. With world-class health and wellbeing services, a place where you can breathe clean air and have ample opportunities to stay fit and healthy, helping you look after both your physical and mental health.

This vision is a testament to the clarity and shared ambition of local people about the future of Epsom and Ewell. It provides an opportunity to harness the borough's inherent strengths and gives confidence that by working together, we can look forward to an even more successful future.



Artists impression of the new state of the art facilities at the UCA Epsom – created by UNStudio.



Cultural & Creative

a place with a clear identity that distinguishes it from other places and recognises Epsom and Ewell's rich cultural and creative spirit. A market town with a unique cultural, shopping, leisure and learning experience that will inspire a new generation of creative minds to live, work and study here.



Smart & Connected

offering the best of both worlds with the bustling Capital and the tranquil countryside within easy reach, a modern, forward looking and innovative place with excellent transport and digital connectivity, and a connected community where people work well together to solve problems and support each other.

The focus now is on working together across the public, private and voluntary sectors to take the necessary first steps to make the vision a reality.

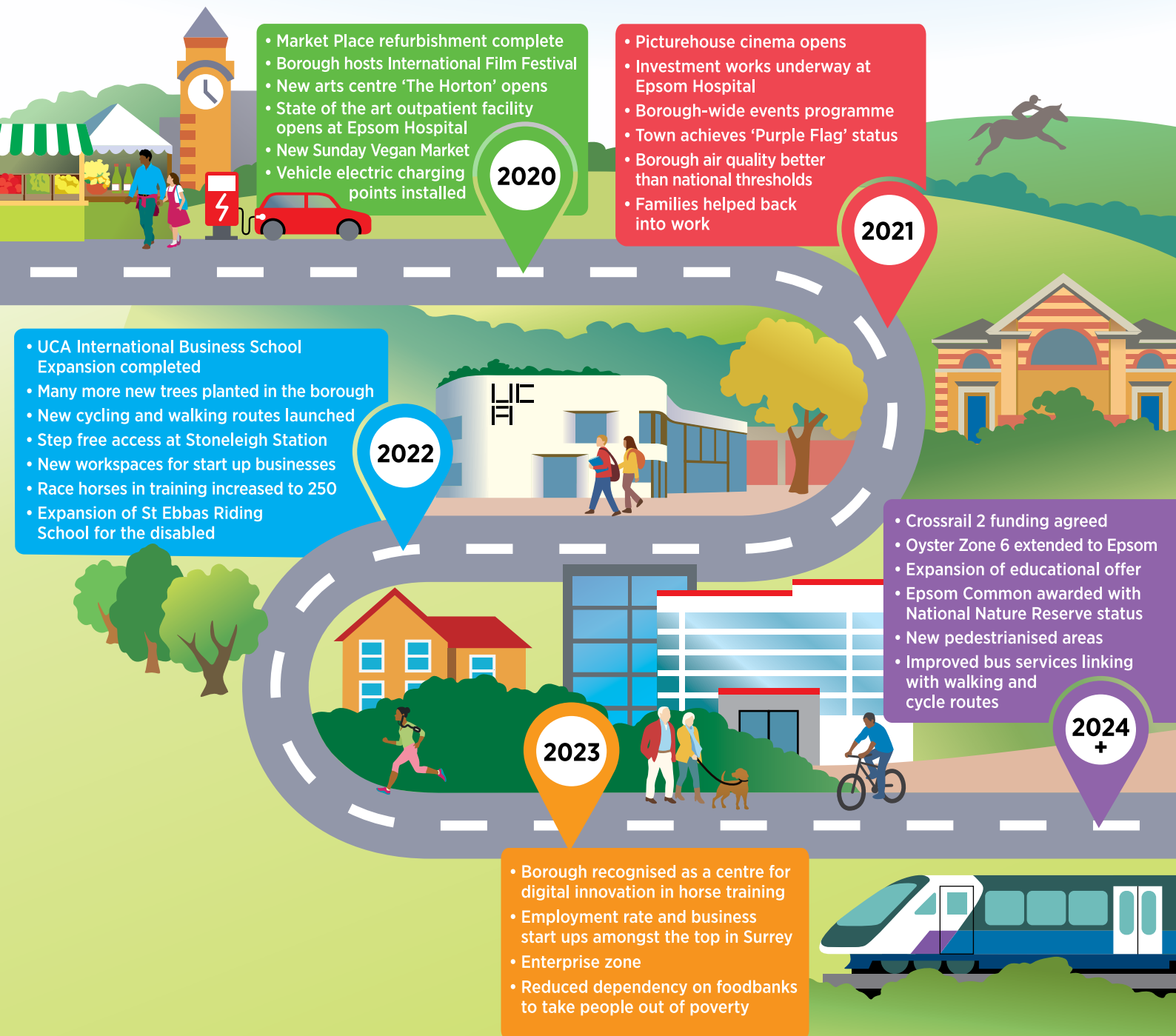
To download a copy of the vision for Epsom and Ewell or to get involved please visit:
www.future40.org

**This is Epsom and Ewell.
This is our future.**

Vision images courtesy of:
Laine Theatre Arts
What's On In Epsom
The Jockey Club
The Ashley Centre
UCA Epsom

Vision for the future

The roadmap for the first five years and beyond





SCHOOL LEAVERS • ADULT EDUCATION • APPRENTICESHIPS • UNIVERSITY-LEVEL • FREE DISTANCE LEARNING

Nescot, the college of choice

2020

MAY

20
WEDNESDAY

OPEN EVENING
4.30PM-7.30PM

Join us in May for our next **Open Event**.

View our facilities, speak to our staff and find out about our wide range of courses from animal studies to performing arts to construction and more.

2020

JUN

20
SATURDAY

SUMMER FAIR
11AM-2PM

Join us in June for our **Summer Fair**.

Bring the family and enjoy our leafy green campus, enter your dog in our dog show, browse the stalls, have a mini-manicure, and enjoy the entertainment.

Register online at www.nescot.ac.uk/open





Local plan update

We are continuing to develop a new Local Plan which will cultivate a positive future for Epsom and Ewell. It will ensure our modern market borough continues to be a special place for people to live, work, learn and enjoy themselves.

The Local Plan will guide the delivery of new homes, jobs, improved transport and green spaces, bringing investment, growth and prosperity. It will also set out strong guidance about the type of growth we expect to see, protecting the borough from inappropriate development.

In November we published six key principles to guide our new strategy. Rooted in the specific needs and unique identity of Epsom and Ewell, these six principles lay the foundations for the preparation of a sound local plan. They are intended to maintain the character of the borough while ensuring new growth is in the right locations. We know that meeting housing needs will be challenging. But by taking leadership of this process and delivering a sound Plan, we can ensure that future developments are shaped in the way that the community want them. This includes focusing growth within the borough's more urban and sustainable areas rather than allow ad hoc development to occur in all parts of the borough.

The views of local people are key to this work. It is essential that the borough's future is formed by those who live and work here, and we will be undertaking a further public consultation this spring to hear your views.

The Local Plan will also be underpinned by a wide range of independent evidence. This includes evidence about the economic development of the borough, its transport, health and education needs,

as well as our green spaces and the environment. The borough council is carefully considering this evidence to ensure that the borough's unique identity is protected and enhanced.

The evidence will guide development and investment in the areas that matter to local people. This means delivering the infrastructure and community benefits needed to support successful and sustainable communities. Alongside new homes, this will include new employment opportunities, schools, shops, transport networks and green space. It will boost investment in the borough, helping to support our successful industries and local jobs.

For example, the evidence shows that in Epsom and Ewell we are fortunate to have a successful retail sector. Unlike town centres in other parts of the country, Epsom has seen a growth in retail trade over the last ten years. The new Local Plan will ensure protections for these successful retail centres, and it will put in place new policies to attract further investment and help them thrive. Guided by the needs of our retailers and employers, this could include providing small-scale shared space for new retail start-ups through to larger flexible space to promote creativity and innovation.

Epsom and Ewell is a great place for people to work, and for businesses to create jobs and thrive. The borough is home to several important and well-established employers and our strategy will

Epsom and Ewell Local Plan 2017-2037



bolster their efforts to deliver prosperity in the area. Increasingly the borough is also becoming a highly attractive location for small businesses, start-ups and entrepreneurs, especially from the creative industries. By protecting and enhancing key employment sites, the new Local Plan will put in place the conditions for success, helping these enterprises to expand and grow.

Similarly, the racecourse is our leading visitor attraction and the racing industry is one of the largest borough employers, but the equestrian sector needs development to protect its future. The new Local Plan presents an opportunity to support much needed investment in the future of horse racing in the borough.

These are just some of the areas where the Local Plan will have a positive long-term impact.

It encompasses a wide range of elements, from housing to employment, the environment and investment. When the consultation launches later this spring, we want to hear the views of local people on all these issues.

The borough's previous Local Plan and related strategies were successful in helping to mould the borough into the welcoming and successful place that it is today. The new Local Plan will have a similar role, responding to the latest challenges we face as a borough and listening to the views of local people to help shape an even better future for decades to come.

More information, including details of the six principles, can be found on our website: www.epsom-ewell.gov.uk/localplan



Picture courtesy: UCA Epsom



Horton's hidden dancer

Félix García was a brilliant flamenco dancer who worked with Russian impresario Sergei Diaghilev and artist Pablo Picasso.

But while Diaghilev told the world García had died in Spain, he was actually incarcerated in an asylum in Epsom for over 20 years.

The young dancer was brought to London in 1919 from his native Seville to star in the premiere of a new complex ballet, *The Three-Cornered Hat*. It is believed that Félix had a breakdown when he discovered from advertising posters that he would no longer be dancing the lead role. He was arrested, diagnosed with schizophrenia and committed to Long Grove Mental Hospital (known as the Horton Asylum) where he died in 1941.

The Horton Chapel Project and Epsom & Ewell Borough Council are pleased to present a touring performance from Spain, specially put together to commemorate Félix García.

The evening performance and daytime talk will be held at Bourne Hall, Ewell on 18 April.

Young professionals will perform traditional work featuring piano, violin, song and dance. Musical director and historian Antonio Hernandez will also deliver a talk on the untold story of Félix García.

Full programme information and tickets are available from the website www.hortonchapelproject.org

**THE HORTON
CHAPEL PROJECT**

AC/E

Acción Cultural
Española

Thanks to the generosity of the performers, all proceeds will be donated to fitting out the performance space at The Horton – Epsom's new cultural venue, due to open in autumn 2020.



Evocation of speed

The repositioning of the sculpture, Evocation of Speed, to Epsom Market Place is one of the final elements of the recent public space renovations.



The work was needed as the old paving was worn out and required replacing. We took the opportunity to improve the underground services to the Market Place, to allow a greater number of events and to meet the needs of modern market stall holders. We have retained and repositioned some of the historical aspects and increased the number of trees, cycle stands, bins and seating.

The Evocation of Speed was paid for in part by subscription to celebrate the millennium. It was originally intended as a piece of public art in what is now Epsom Square, however new land owners decided they wanted to use the space differently and, following a temporary home, the statue has now been moved to its new permanent location.

The bronze sculpture, captures the changing face of the Derby since 1780. It depicts Diomed, the winner of the first ever Derby, on one side with Galileo, winner in 2001, on the other. The galloping racehorses show Diomed's jockey dressed in buttoned breeches and riding with long stirrups, while Galileo and his jockey convey the professionalism of a modern winner. It was created by world-renowned equestrian artist, Judy Boyt, who advised us on the new position of her work.

While the renovation works to the Market Place are now nearing completion, we haven't finished. The paving on the opposite side of the road also needs replacing which we will be undertaking in the coming weeks. After the Derby, we will be

switching our attention to the Clock Tower. One of the most recognisable features of the town centre and a listed building, the structure needs some TLC after 170+ years; with repointing to the brickwork and maintenance to the roof of the lower level.



Markets in 2020

- Our regular market is each Thursday and Saturday
- Farmers Market – first Sunday of the month
- Vegan Market – fourth Sunday of the month

Watch this space for other events coming up this year in the Market Place.

TJCLOCAL

INVESTEC SPRING MEETING

RACING IS BACK

Wednesday 22 April

Epsom Downs Racecourse

Use the local TJCLOCAL for 4 free tickets!



◆◆◆◆
THE JOCKEY CLUB
EPSOM DOWNS

Investec

Pledge to be part of the pick!

Be part of a community volunteer litter pick and join the many local residents, community groups and local school children from across the borough who regularly get together to help keep our borough clean and tidy.



We strive to keep our borough clean and are very grateful to all those community-minded residents and organisations who support our efforts by regularly organising litter picks in their local area. The involvement of the community, along with our street cleaning activities, makes a real difference and goes a long way in helping us keep our borough a clean, safe and green place for all who live, work, study and visit Epsom and Ewell.

A huge thank you to everyone who has signed our volunteer litter picking pledge and for all your efforts, it is greatly appreciated!

Anyone interested in getting involved in keeping their community clean by undertaking litter picks across the borough can sign up to our volunteer litter picking pledge at:

www.epsom-ewell.gov.uk/volunteerlitterpicks

You will find a handy guidance leaflet featuring a step-by-step guide for holding a litter pick, information on safety and best practice and instructions for arranging rubbish collection.

Available on a first come first serve basis and subject to availability, residents and groups who sign up will also be provided with returnable litter picking kits and equipment that are all safe to use and includes gloves, high visibility waistcoats and litter picker sticks.

In the past year:

81 households in the borough have signed our volunteer litter picking pledge

116 adult kits issued

101 child kits issued

Lerryn, pictured above with her daughter, who runs the Keep Epsom & Ewell Tidy Facebook page, shares her experience of litter picks.

"When I did my very first litter pick I felt ridiculously self-conscious. What did others think of me? I was doing a good thing! It dawned on me that you just don't see or read about others litter picking, and it's seen more as a punishment if anyone is doing it. Following a post, I wrote on the Epsom & Ewell Families Facebook page, I was astounded to discover many more like-minded residents who responded along the lines of, 'Yep! I litter pick too!'"

"With the help of a lovely resident, Emily, we set up the 'Keep Epsom & Ewell Tidy' Facebook page to shout about and showcase everyone's efforts – from posts about group litter picks, individual litter picks to upcoming events, how you can involve the children and lots more!"

"A year on, I can say I no longer hide away whilst litter picking, but happily say hello to passers-by who smile and normally stop for a chat! Obviously, the end goal would be everyone putting their litter in a bin, but I can honestly say I enjoy the excuse to get out in the fresh air, and take pride in where I live. My five-year-old daughter regularly joins me on my weekly 'pledge' pick around our road, and it's brilliant to educate her about the importance of looking after where we live. Litter picking has become something I like doing, and I really love the positive impact it has had on me and my family."

Search for Keep Epsom & Ewell Tidy on Facebook for updates on community clean-ups and litter picking in the borough.



Life Is For Living
The lifestyle event inspiring you to live your best life

16 & 17th May 2020, Sandown Park, Surrey

- * Exhibition * Informative and Inspiring Talks
- * Demonstrations * Delicious Samplings
- * Interactive Workshops * One to One Advice Clinics

Join us for a day of discovery at this new lifestyle event where those planning or enjoying their retirement will learn how to achieve their optimum lifestyle.



Style, Beauty & Grooming



Travel & Leisure



Financial Services and Estate Planning



Health, Fitness, Wellbeing & Nutrition



Food & Drink



Lifestyle Services

Tickets - £10 per person Register to visit at www.lifeisforlivingshow.co.uk/register



Charity Partner



Travel Partner



FOLLOW US



Play for Team Epsom & Ewell

Specsavers Surrey Youth Games

13 - 14 June 2020



The largest multi-sports competition in Surrey, offers young people aged 6-16 a chance to take part in a range of sports, including events for young people with disabilities whilst receiving free coaching.

The free training sessions start from April, and are led by local sports clubs that offer participants a chance to play their chosen sport after the Games have finished.

Participants selected to represent the borough compete with teams from 10 other Surrey boroughs and districts on the finals weekend of 13-14 June at Surrey Sports Park in Guildford.

Be part of Team Epsom & Ewell for the Specsavers Surrey Youth Games. Try a new sport and make new friends too! Register online today at www.epsom-ewell.gov.uk/syg

Did you know?

This year's Games welcome new sports such as Go Tri Gym Challenge, Cage Cricket & Street Basketball.

To be eligible to represent Team Epsom & Ewell participants must live or go to school in the borough, be of sub-county standard and not a club member in their chosen sport. Each sport also has its own specific eligibility requirements. For further information, including a list of sports, training session dates, times and venues and to register to take part, please visit our website.

Did you know?

Team Epsom & Ewell had great success in 2019, securing two gold, three silver, three bronze medals and 15 individual medals in judo! We hope to continue this success in 2020.

Follow us on Twitter, Facebook and Instagram
[@EpsomEwellBC](https://twitter.com/EpsomEwellBC) [#TeamEpsomEwell](https://twitter.com/TeamEpsomEwell)
[#SpecsaversSYG](https://twitter.com/SpecsaversSYG)

Round the Borough Bike 10 May 2020 Free event for all the family.



Get on your bike for this family friendly annual cycling event that is open to all ages and abilities.

The 20-mile mostly off-road bike ride is one of the best ways to experience the borough's beautiful open spaces. The route leads along country lanes, through parks and nature reserves and criss-crosses Epsom and Ewell, avoiding the busiest roads wherever possible. Each participant that completes the route will receive a certificate and under 16's will receive a medal.

The event starts and finishes at Horton Country Park and covers Epsom Downs, Epsom Common, Nonsuch Park and the Hogsmill. Off road cycles are recommended for the route. To view a map and to register to take part, visit www.epsom-ewell.gov.uk/rbhb.

Online registrations closes at midday on 6 May, don't delay register to explore your borough by bike today!

BUNNY EARS AND EASTER EGG FOR EVERY RUNNER

OPTIONAL EASTER FANCY DRESS PRIZES FOR BEST DRESSED BUNNY

EASTER BUNNY HOP!

FAMILY FUN RUN

2K AND 5K DISTANCES

SUNDAY 5TH APRIL – 10 AM

JOIN US AT NONSUCH PARK IN AID OF AGE CONCERN EPSOM & EWELL

**ADULT £12.50
CHILD £7.50
FAMILY TICKET £30 (2 ADULTS AND UP TO 3 CHILDREN)**

UNDER 3'S AND DOGS GO FREE

AGE Concern Epsom & Ewell
Helping Older People Feel Less Alone

REGISTER ONLINE AT AGECONCERNEPSOM.ORG.UK

With special thanks to our supporter **maven veterinary care**

BANK HOLIDAY

VE DAY CELEBRATION

STREET PARTY

Friday 8th May

Entertainment, history, music and dance in the **EPSOM MARKET PLACE**

12pm-5pm

Last Post (observed nationwide) at 2:55pm

Join us as we join the nation to celebrate

AGE Concern Epsom & Ewell
Helping Older People Feel Less Alone

Working in partnership with **GO EPSOM**

75 VE DAY
75TH ANNIVERSARY
A SHARED MOMENT OF CELEBRATION

AGE Concern Epsom & Ewell

INFORMATION & ADVICE

Our Information & Advice desk is open 9:30am-1:00pm Monday-Friday at The Old Town Hall, Epsom. No appointments necessary. Or you can call us on **01372 732 456**

MEDICAL TRANSPORT

Do you need transport for your medical appointment? To register for the Medical Transport Scheme please call **01372 732 456**

BEFRIENDING

Do you know anyone who is feeling lonely and/or isolated? For more information about our Befriending Service please call **01372 732 456**

HOME VISITING

Home visitors can assist you with applications for Blue Badges, Attendance Allowance and much more. To find out about this service please call **01372 732 456**

MEN'S GROUP

Our Men's Group is run for like-minded men 65+ in the local area to participate in social activities. For more information about the Men's Group please call **01372 732 456**



For all enquiries please contact Age Concern Epsom & Ewell

01372 732 456

Monday- Friday
9:30am-1pm

or email
info@ageconcernepsom.org.uk

Age Concern Epsom & Ewell,
The Old Town Hall, The Parade,
Epsom, KT18 5AG

www.ageconcernepsom.org.uk



To book an appointment please call the Foot Clinic on

Monday, Thursday or Friday
01372 747 077

or email
footcare@ageconcernepsom.org.uk

Community and Wellbeing Centre
Sefton Road
Epsom KT19 9HG

www.ageconcernepsom.org.uk

AGE Concern Epsom & Ewell

Our friendly and experienced footcare practitioners can cut toenails, file skin and give advice on footcare in our clinic.

The service is available to anyone who lives in or around Surrey

We can offer the footcare service to people with most medical conditions but please check when registering

There is a one off registration fee of £15. This fee includes a set of instruments. Clients bring their own instruments to each appointment.

Foot Clinic appointment £17

Finger nail clipping during a toenail cutting appointment costs an extra £3.00

£5 OFF

GET £5 OFF OF YOUR FOOT CLINIC REGISTRATION FEE

This voucher entitles you to a registration fee of just £10. This offer is valid at the Age Concern Epsom & Ewell Foot Clinic until 30 April 2020. This offer is not transferable

News bytes

News featured or about to be featured online including in e-Borough Insight, your monthly borough update on news, feature, events, community info and lots more! (Subscribe at insight.epsom-ewell.gov.uk/subscribe).



Steps for health

The NHS recommends a brisk ten-minute daily walk as part of a healthy lifestyle, citing heart health, calorie-burning and stamina building as key outcomes. Put simply: walking is good for you. We and our partners run various different types of walks throughout the year, including the popular health walks.

Last summer, we piloted a successful social diabetes walking programme. The group who took part last summer had a 100% success rate for losing weight and improving blood pressure. They have also made lasting friendships and are very supportive of each other.



We are planning to run the free 12 week diabetes walks programme this summer. The walks allow those with diabetes to be more active and improve their health and wellbeing. The programme is free, to register and receive more information please email: leisuredevelopmentsteam@epsom-ewell.gov.uk.



Neil Dallen MBE

Town Ward Councillor and former Mayor Neil Dallen was named "a Member of the Most Excellent Order of the British Empire" in the New Year Honours. The Councillor was recognised for his services to Local Government and to young people.

Organising an event?

Events in our community are part of what makes Epsom and Ewell such a creative and vibrant place and such a special place to live. However, there is a lot more that goes into organising a successful public event than most people realise. For those considering organising an event for the first time, the number of things that need to be considered can feel overwhelming, whether organising a small street party or a major event attracting thousands of people.

To help make things a little bit easier, we have published a simple guide to planning an event. This includes a checklist of the most important items and useful contact details. There is also additional guidance for those involved in organising larger events, and specific details on things like arranging road closures.



For more information please see our website and search for event planning.



Careers at the Royal Automobile Club

One of the World's foremost private members' clubs



www.royalautomobileclub-jobs.co.uk/vacancies

MB ROOFING

Chessington Ltd

MB Roofing offers a friendly and professional service with over 25 years of roofing experience.

We offer competitive prices and also offer a 10 year workmanship guarantee backed by the Confederation of Roofing Contractors on all new work undertaken.

Our work includes, flat roofing, pitched roofing, lead work, repairs, fascia, soffits, guttering and re-bedding and pointing of hip and ridge tiles.

Please feel free to contact us on:

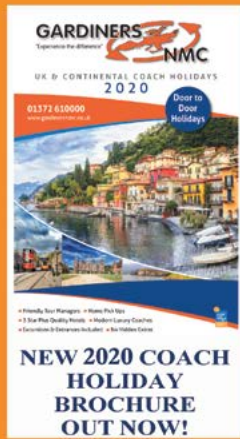
Mobile: 07714256887 Tel: 0208 2415866

Email: info@mbroofingchessingtonltd.co.uk



To view our work and over 460 reviews please visit

www.checkatrade.com/mbroofingchessington or www.mbroofingchessington.co.uk



JUST ARRIVED - 2020 DAY EXCURSION PROGRAMME!!!!



ALL OF OUR COACH HOLIDAYS ENJOY

Free Home Collection

Friendly Tour Managers

3 Star Plus Quality Hotels

Modern Luxury Coaches

Excursions and Entrances



Call 01372 610000 or Visit www.gardinersnmc.co.uk

Time for some Help at Home?



Contact us on: **01883 343095**
www.ageuk.org.uk/surrey

Noticed a change in an older person in your family?

Call us today to find out how we can support you or your family member to remain happy and independent at home.



Cleaning



Companionship



Shopping



Gardening

Useful contacts

Epsom & Ewell Borough Councillors

Auriol

John Beckett:
JBeckett@epsom-ewell.gov.uk
020 8393 8208

Peter Webb:
PWebb@epsom-ewell.gov.uk
07941 231072

College

Nigel Collin:
NCollin@epsom-ewell.gov.uk
07771 712050

David Gulland:
DGulland@epsom-ewell.gov.uk
07801 573431

Julie Morris:
JMorris@epsom-ewell.gov.uk
01372 744297

Court

Kate Chinn:
KChinn@epsom-ewell.gov.uk
07775 725818

Robert Geleit:
RGeleit@epsom-ewell.gov.uk
07791 519048

Debbie Monksfield:
DMonksfield@epsom-ewell.gov.uk
07763 512428

Cuddington

Lucie Dallen:
LDallen@epsom-ewell.gov.uk
01372 732791

Robert Foote:
RFoote@epsom-ewell.gov.uk
07519 460761

Phil Neale:
PNeale@epsom-ewell.gov.uk
07711 716255

Ewell

Christine Cleveland:
CCleveland@epsom-ewell.gov.uk
07974 433934

Humphrey Reynolds:
HReynolds@epsom-ewell.gov.uk
020 8393 4753

Clive Woodbridge:
CWoodbridge@epsom-ewell.gov.uk
020 8393 2853

Ewell Court

Eber Kington:
ekington@epsom-ewell.gov.uk
020 8786 7484

Peter O'Donovan:
PO'Donovan@epsom-ewell.gov.uk
07931 130902

Guy Robbins:
GRobbins@epsom-ewell.gov.uk
01372 732000

Nonsuch

Christopher Frost:
CFrost@epsom-ewell.gov.uk
01372 720430

Christine Howells:
CHowells@epsom-ewell.gov.uk
020 8393 8555

Colin Keane:
CKeane@epsom-ewell.gov.uk
020 8393 7715

Ruxley

Alex Coley:
AColey@epsom-ewell.gov.uk
07421 450311

Jan Mason:
JMason@epsom-ewell.gov.uk
020 8397 7609

Alan Sursham:
ASursham@epsom-ewell.gov.uk
07784 716567

Stamford

Steve Bridger:
SBridger@epsom-ewell.gov.uk
07873 150268

Previn Sing Jagutpal:
PJagutpal@epsom-ewell.gov.uk
07476 294849

Bernie Muir:
BMuir@epsom-ewell.gov.uk
01372 801880

Stoneleigh

Hannah Dalton:
HDalton@epsom-ewell.gov.uk
07740 407050

David Reeve:
DReeve@epsom-ewell.gov.uk
07808 889653

Chris Webb:
CWebb@epsom-ewell.gov.uk
07585 220122

Town

Arthur Abdulin:
AAbdulin@epsom-ewell.gov.uk
07451 244158

Neil Dallen:
NDallen@epsom-ewell.gov.uk
01372 732793

Luke Giles:
LGiles@epsom-ewell.gov.uk
07984 147175

West Ewell

Monica Coleman:
MColeman@epsom-ewell.gov.uk
07538 819743

Barry Nash:
BNash@epsom-ewell.gov.uk
07836 555888

Clive Smitheram:
CSmitheram@epsom-ewell.gov.uk
020 8224 9226

BBC Surrey: 104.0 & 104.6 FM,
DAB, Freeview 722

Radio Jackie: 107.8 FM

Eagle Radio: 96.4 FM, DAB

Woodcote

Liz Frost:
LFrost@epsom-ewell.gov.uk
01372 720430

Bernice Froud:
BFroud@epsom-ewell.gov.uk
01372 811555

Steven McCormick:
SMcCormick@epsom-ewell.gov.uk
01372 739727

Council Meetings

Residents can attend meetings held in public at the Town Hall or where stated. Visit our website to view the full year calendar and for information on how to ask questions at meetings. Agenda papers are available to download five working days before the meeting. For more information contact Democratic Services at the Town Hall – we're always happy to help.

March 2020

Community and Wellbeing Committee
19 March; 7.30pm

Environment and Safe Communities Committee
24 March; 7.30pm

Strategy and Resources Committee
31 March; 7.30pm

April 2020

Audit, Crime & Disorder and Scrutiny Committee
9 April; 7.30pm

Council
14 April; 7.30pm

Planning Committee
16 April; 7pm

Licensing and Planning Policy Committee
23 April; 7pm

Nonsuch Park Joint Management Committee
27 April; 10am, Nonsuch Park Mansion House

Contact the council

The best way to contact us is via the website:
www.epsom-ewell.gov.uk

Email:
contactus@epsom-ewell.gov.uk

Emergency telephone
(operates 24 hours):
01372 732000

Our address
Town Hall, The Parade, Epsom,
Surrey, KT18 5BY

County Councillors

Epsom Town & Downs
Tina Mountain - 01372 272499
tina.mountain@surreycc.gov.uk

Epsom West
Bernie Muir - 01372 801880
bernie.muir@surreycc.gov.uk

Ewell
John Beckett - 020 8393 8208
john.beckett@surreycc.gov.uk

Ewell Court, Auriol & Cuddington

Eber Kington - 020 8786 7484
ekington@epsom-ewell.gov.uk

West Ewell
Jan Mason - 020 8397 7609
jmason@epsom-ewell.gov.uk

Your MP

The Rt Hon Chris Grayling MP
Constituency office:
01372 271 036

Westminster office:

020 7219 8194
chris.grayling.mp@parliament.uk

Dear diary

May



VE Day, Friday 8 May

This year's early May Day bank holiday has been moved to coincide with the 75th anniversary of VE Day. VE Day (Victory in Europe Day) was a day of celebration as the Allies accepted the surrender of Nazi Germany in the Second World War.

As they did 75 years ago, the borough celebrations will be centred in Epsom Market Place, where Go Epsom will be holding a number of WW2 family activities and one or two surprises!

Employment and skills fair, Wednesday 20 May

The Epsom and Ewell Employment and Skills Fair is back for its 5th year!

This event is designed to bring people and jobs together, with the opportunity for face-to-face meetings with local employers who will have live vacancies available on the day.

Five local organisations; Rosebery Housing Association, The Ethos Project, Epsom & Ewell Borough Council, The Best of Epsom & Ewell and What's On In Epsom - have come together to offer support and guidance for those who are out of work, returning to work or looking for a new opportunity, providing attendees the opportunity to speak with employers and training providers.

The event is free for the public to attend, open from 11am to 3pm in the Sports Hall at the Rainbow Leisure Centre, East Street, Epsom, KT17 1BN.

For more information visit:

www.facebook.com/EpsomandEwellEmploymentandSkillsFair

June

MGS04, 22-28 June

Save the date for this summer's creative arts festival. The third MGS04 Festival (its name inspired by the chemical formula for Epsom Salts) will take place from 22-28 June throughout the borough.

This year's festival theme is 'Journeys' and the charity running the festival will be focusing on helping more children and young people to get involved in exciting high-quality creative activities.

For more information visit: mgso4festival.org



October

Satisfied Eye Film Festival, 8 - 11 October

After a year away, Satisfied Eye has come back home to Epsom, fittingly enough hosted this time at the University of the Creative Arts.

The long weekend of film and documentary screenings, workshops, and more and culminates in a glamorous red carpet awards ceremony. The heart of the festival is a wonderful selection of the best new independent features, short films, animation and documentary, submitted from across the world.

Can't wait until October? Keep an eye out for screenings and events through spring and summer.

For more information visit: satisfiedeye.com





WILSONS EPSOM, YOUR NEW HYUNDAI DEALERSHIP



DISCOVER OUR INCREDIBLE RANGE.
ALL WITH 5 YEARS WARRANTY

HYUNDAI

CALL US ON 0203 8463 985 OR VISIT OUR
WEBSITE WWW.WILSONS.CO.UK

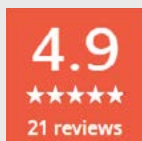


HYUNDAI

ALREADY A HYUNDAI OWNER AND LOOKING TO
SERVICE OR MOT YOUR CAR?

GET 10% OFF WITH THIS VOUCHER

CALL US ON 01372 736 000 OR VISIT OUR WEBSITE
WWW.WILSONS.CO.UK



Stay Covered

Our Premier Gas maintenance package provides total peace of mind for just **51p** per day



Gas & Electrical Premier Packages

The **Total Solution** for all of your Gas & Electrical maintenance, servicing and breakdown needs

Included in Premier Gas:

- Annual Boiler Service
- Parts & Labour
- Unlimited Callouts
- No Excess
- Emergency Service 24/7
- Pump, Control, Pipework & Radiator Repairs

10%

off all packages
quote **SAVE10***

020 8722 3439

ths@smithandbyford.com

www.smithandbyford.com

36 The Broadway, Cheam Village, SM3 8BD

*T&C apply, see in store for details. 10% off until 30th June 2020