



© OpenStreetMap contributors, CC-BY-SA
 © Crown copyright and database right 2010

Key - Round the Borough Hike & Bike North West

- Hike & Bike Route
- ▲ Caution Road Crossing
- P - Car Park
- T - Toilet
- R - Refreshments
- i7 - Information (see reverse)
- ◆ Mile Marker

0 500m

i1 Welcome to Horton Country Park Local Nature Reserve. Created in 1973 the Country Park is a landscape of fields, hedgerows, woods, streams, paths and ponds of great wildlife and historical interest.

i2 On your left the tower is a part of the former West Park Hospital one of five hospitals making up what was once one of the biggest complexes of psychiatric hospitals in the world with around 12,000 patients. In recent years the hospitals have been closed and redeveloped for housing.

i3 As you head north you are travelling along the route of the former Horton Light Railway which was used to supply several of the old psychiatric hospitals with coal and other supplies. The photo opposite is of the engine 'Hendon' in January 1938 passing Four Acre Wood, and you are about to pass the exact spot where the photograph was taken!



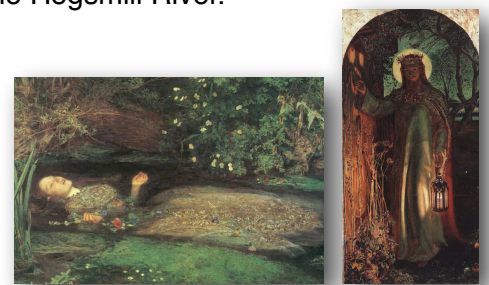
i4 You are now in Butcher's Grove one of six 'Ancient Woodlands' within Horton Country Park Local Nature Reserve. Woodland that is designated as 'Ancient' is known to have been woodland since at least 1600. In the past woodland was a vital source of timber and fuel, today the woods are also managed for wildlife. Volunteers from the Lower Mole Countryside Management Project have played a vital role in recent decades by re-introducing coppicing, which is the old and sustainable way of managing our woods. The coppice products are used to lay hedges, protect recently coppiced areas from deer and for making benches and signs for the Borough's 'Local Nature Reserves'.

i5 Take care when crossing Chessington Road. Welcome to the Hogsmill Local Nature Reserve which follows the Bonesgate Stream and River Hogsmill as they meander towards the Thames at Kingston. The reserve is a haven for local wildlife, look out for the electric blue of Kingfishers as they dart along the river. Follow the path north with the Bonesgate Stream to your left. The name Bonesgate is thought to refer to the mass burial of London's 'Great Plague' victims of 1665 somewhere in this vicinity.

i6 On the other side of the stream is Tolworth Court Farm Meadows in the Royal Borough of Kingston upon Thames. The site of Tolworth Court Farm was first documented in the Domesday Book c1086, with the farm recorded as having 15 families, a mill, 5 hides and 7 slaves.

i7 Cross over the Green Bridge and turn right on to the path beside the Hogsmill River.

i8 The Hogsmill river and its surrounding countryside was once the haunt of the Pre-Raphaelite painters John Everett Millais and William Holman Hunt. World famous paintings such as *Ophelia*, by Millais and the *Light of the World* by Hunt were painted in and alongside the river. In the 1850s when they stayed in Ewell this area was a rural landscape and remained so until the huge house building boom between the first and second world wars. Today the Hogsmill Local Nature Reserve is a last remnant of those far off rural days. You can find out more about the Pre-Raphaelite's by using this link.



http://en.wikipedia.org/wiki/Pre-Raphaelite_Brotherhood

The route now moves on to the North East map